



Summer | 21

BEAR FACTS

An Official Publication of the New-Pen-Del Newfoundland Club

UPCOMING EVENTS

September 17th-19th 2021

Water Test
Beltzville State Park, Leighton, PA

October 6th 2021

Morris & Essex Kennel Club Dog Show
Regional Specialty
Colonial Park, Somerset, NJ

October 16th-17th 2021

Draft Test
Brubaker Park, East Earl, PA

October 30th 2021

Fall Fun Day
Mercer County Park, Princeton Junction, NJ

November 2021

(Date Pending)

Cardiac Clinic
Oley, PA

Spring 2022

(Date Pending)

Draft Workshop
Mercer County Park, Princeton Junction, NJ

PRESIDENT'S MESSAGE

(GUEST MESSAGE FROM NPD VP)

Ana here, NPD VP and Bear Facts Editor taking over the President's Message in this issue!! Chris won't notice! 😊

The New Pen Del Board and Committee Chairs have been busy planning lots of fun events for our members. We've arranged for multiple water training locations and coordinated with other local newf clubs to give members multiple options for training. We have a packed fall schedule! Our Water Test is scheduled for September and we are raffling an amazing Water Training Bag graciously donated by Board Member, SewNewf's Karin Bystol!

October will be a busy month, starting with a Regional at the prestigious Morris & Essex Dog Show. This show occurs only once every five years so make a plan to attend and cheer on the newfs! We're also hosting a Draft Test and one of our members' favorite events, the NPD Fun Day and Annual Meeting. This year, we'll also be presenting Annual Awards at the Fun Day. If you can volunteer at any of these events, we welcome the help! Please reach out to the event chairs listed in the event flyers, herein, to find out how you can help.

CONTINUED, NEXT PAGE



Find us on
Facebook OR



Instagram

**PRESIDENT’S MESSAGE
(CONT.)**

In November, we’re planning a cardiac clinic. This will be a great event for testing litters or for getting dogs tested for OFA certification. Finally, we’re in the process of organizing our annual Christmas tree pulls, likely occurring in late November.

I’ve been so thrilled to see our members again this summer at working events, educational events, and at dog shows. We have many members with new puppies, and it’s been wonderful to see the start of the bond formed when we work with our dogs. We continue to monitor state and local laws and CDC guidelines as they relate to the Covid pandemic and are taking necessary precautions, where applicable, to ensure members can attend events comfortably. I look forward to seeing you all at the many upcoming events.

Best Regards,
Ana Peraza Kroeger
New-Pen-Del Vice President



IN THIS ISSUE

Upcoming Events 1
 President’s Message.....1-2
 Officers & Committee Chairs.....3
 Bulletin Board.....4
 Membership & Applicants.....5-7
 NPD News!.....8

Events

Education Day: Trails & Trailblazers at Winterthur Museum and Gardens.....9-14
 NPD Water Test.....15-16
 Morris & Essex Regional Dog Show..17
 Draft Test..... 18
 Fall Fun Day.....19
 Cardiac Clinic.....20-24
 Draft Workshop.....25

Interest Articles

Line Combing.....26-29

Pet Health

Dogs Eating Cicadas.....30-31
 Gastric dilatation and Volvulus (Bloat).....32-33

Meet our Canine Members!.....34-35

Braggs & Wags! 36-39
 In Memoriam.....40-41

How Well Do You Know the Newf... 42-43

About This Publication.....44
 Meeting Minutes.....45-69

How Well Do You Know the Newf

Answer Key.....70-71

NEW-PEN-DEL

BOARD MEMBERS & COMMITTEE CHAIRS

OFFICERS

<i>President</i>	Christine LaMuraglia	Tokennewf@gmail.com	908.208.0700
<i>Vice-President</i>	Ana Peraza Kroeger	anaperaza@comcast.net	908.553.6596
<i>Secretary</i>	Karen Doman	kqdoman@frontier.com	215.534.3206
<i>Treasurer</i>	Mark Keyser	Mkeyser22@comcast.net	717.468.8504
<i>Working Dog Sec.</i>	Amy Supko	dael@embarqmail.com	862.268.1861
<i>Board Member</i>	John O'Neill	johnoneilldvm@gmail.com	717.278.5625
<i>Board Member</i>	Tiffany Reed	bandit12082@yahoo.com	908.507.2331
<i>Board Member</i>	Karin Bystol	ikbzmommy@gmail.com	908.418.5123
<i>Board Member</i>	Catherine Wisniewski	Cwisniewski85@gmail.com	215.260.4460
<i>Board Member</i>	Donna Campbell	donnacampbell2835@gmail.com	201.956.7698

COMMITTEE CHAIRS

<i>Awards</i>	Donna Campbell	donnacampbell2835@gmail.com	201.956.7698
	Karin Bystol	ikbzmommy@gmail.com	908.418.5123
<i>Trophies</i>	Wendy Keyser	wgmaddiesmom@comcast.net	717.413.6651
<i>Bear Facts Editor</i>	Ana Peraza Kroeger	npdbearfacts@gmail.com	908.553.6596
<i>Bench Show</i>	Christine LaMuraglia	Tokennewf@aol.com	908.208.0700
<i>Education</i>	Kat Lynn	Katlynn4@gmail.com	609.510.8966
<i>Finance</i>	Mark Keyser	MKeyser22@comcast.net	717.468.8504
<i>Membership</i>	Tiffany Reed	bandit12082@yahoo.com	908.507.2331
	Amy Kroeger	Aim72@comcast.net	732.615.7745
<i>Property</i>	Gary Ottey	gottey@verizon.net	610.420.1063
<i>Rescue</i>		VACANT	
<i>Visual Historian</i>	Donna Campbell	donnacampbell2835@gmail.com	201.956.7698
<i>Ways and Means</i>	Euny Warren	Eunyhwang@hotmail.com	609. 851.3636
<i>Digital Committee</i>	Ana Peraza Kroeger	anaperaza@comcast.net	908.553.6596
<i>Sunshine Chair</i>	Amy Supko	dael@embarqmail.com	862.268.1861

BULLETIN BOARD



**SUNSHINE
CHAIR**

Please reach out to our Sunshine Chair, Amy Supko if you know of someone that can use a bit of "sunshine".
dael@embarqmail.com



**OPEN CHAIR
POSITIONS**

Trophies Chair
Choose trophies for our events
Please contact the board if you can help!

HELP WANTED
New-Pen-Del is still in need of an experienced *Rescue Chair*. Please contact the board if you can help!

**Bear Facts
Classifieds**

Next issue will feature a classifieds section. Send us your ad for any gently used dog items you're looking to sell and we'll feature it in our classifieds section.

MEMBERSHIP



INTERESTED IN BECOMING A MEMBER??

Membership applications can be found on the website:

[NPD Membership Portal](#)

Please contact New-Pen-Del Membership Chairs,

Tiffany Reed (bandit12082@yahoo.com) or

Amy Kroeger (aim72@comcast.net)

with questions.

Lisa Lathrop
Warwick, MD
Sponsor – Wendy Keyser

Patricia Schmiedel
Manasquan, NJ
Sponsor – Wendy Keyser

Laurie & John DeFilippis
Madison, NJ
Sponsor - Wendy Keyser,
Membership Chair

Leigh Colberg
Landenberg, PA
Sponsor – Wendy Keyser

Michael Savino
Sugarloaf, PA
Sponsor – Ana Peraza

Morgan Leister
Pipersville, PA
Sponsor - Karen Doman

Craig Dunn
Cream Ridge, NJ
Sponsors – Kat Lynn & John Affel

New Applicants for NPD Membership

The Board of Directors has given preliminary approval to the following applicants. Comments on applicants are solicited from members for a period of 30 days from receipt of publication. All communications are to be sent to New-Pen-Del Membership Chairs:

Tiffany Reed (bandit12082@yahoo.com) or
Amy Kroeger (aim72@comcast.net)

Dolores Romano Everett
Stroudsburg, PA
Sponsor: George Abraham

Jennifer Flood
Wynnewood, PA
Sponsor: Tiffany Reed

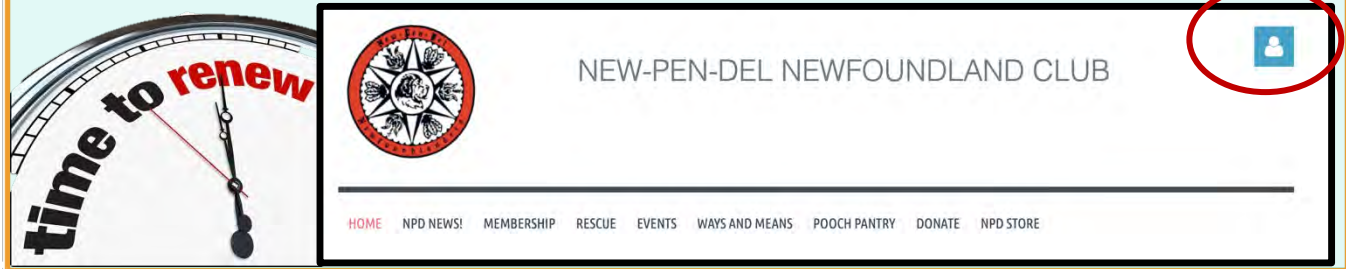
NEW-PEN-DEL MEMBERSHIP



STAY CONNECTED TO NPD...

A Note from the NPD Membership Chair...

Our Annual Membership Renewal drive is upon us! All membership renewals are due by 9/1/21! Due to our automated renewal system there will be **NO EXCEPTIONS** so please get them in on time! An email from New-Pen-Del regarding your dues was sent out on August 1st! **Please contact Amy Kroeger at aim72@comcast.net if you have not received your renewal email.**

Or Visit <https://npdnewfs.wildapricot.org> and click the blue box on the top right of the page to view your profile. Next, click on the blue box to renew til September 1, 2022. It's so easy!



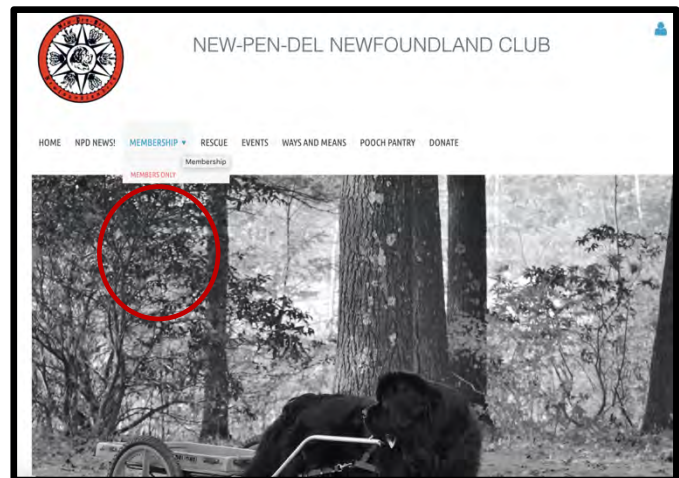
 <p>LEARN ABOUT NEW-PEN-DEL</p> <p>If you're interested in becoming a member of the New-Pen-Del Newfoundland Club we suggest that you read through our constitution (PDF) and bylaws to get a better understanding of the club's mission and rules. We encourage you to attend a few events to see what we're all about and enjoy in the fabulous company and meet some wonderful animals. This is a wonderful way to see all the fun and exciting things the club offers and a way to meet potential sponsors. You will find links to the constitution & bylaws above and an interactive application below.</p>	<p>BENEFITS OF MEMBERSHIP</p> <p>New-Pen-Del hosts water tests and draft tests, regional specialty shows with beautiful prizes, educational events such as grooming seminars, water rescue training and draft seminars. We also host a wonderful fall festival with Newfie games, including the very popular Newfie Obstacle Course and various other fun activities where owners can get together and share their appreciation for the breed. Additionally, New-Pen-Del hosts an annual awards dinner to celebrate the yearly accomplishments of your dogs with prizes and personalized slide shows for the membership to enjoy.</p> <p>New-Pen-Del can be a wonderful resource for newer Newfoundland owners as there is usually many, many years of Newfoundland experience just waiting to be tapped.</p> <p>Please Contact the Membership Chair with questions or for more information.</p>	 <p>MEMBERSHIP CHAIR</p> <p>Wendy Keyser wgnaddesmom@comcast.net Membership Chair</p> <p>TO PRINT AND MAIL THE APPLICATION, CLICK THE LINK BELOW</p> <p>MEMBERSHIP APPLICATION</p>
----------------------------------------------------------------------------------------------------------------------------------------------------------------------------------------------------------------------------------------------------------------------------------------------------------------------------------------------------------------------------------------------------------------------------------------------------------------------------------------------------------------------------------------------------------------------------------------------------------------------------------------------------------------------------------------------------------------	---------------------------------------------------------------------------------------------------------------------------------------------------------------------------------------------------------------------------------------------------------------------------------------------------------------------------------------------------------------------------------------------------------------------------------------------------------------------------------------------------------------------------------------------------------------------------------------------------------------------------------------------------------------------------------------------------------------------------------------------------------------------------------------------------------------------------------------------------------------------------------------------------------	------------------------------------------------------------------------------------------------------------------------------------------------------------------------------------------------------------------------------------------------------------------------------------------------------

NEW-PEN-DEL NEWF CLUB GOES DIGITAL!

If you haven't already done so, please check out New-Pen-Del's new membership portal! Check out current and up to date information on our events, our members and products <https://npdnewfs.wildapricot.org>

MEMBER'S ONLY SECTION

Members are invited to access the *Members Only* section of the Portal. Click the down arrow, next to "Membership" and click on "Members Only". You'll be prompted to enter your username and password. From there you'll have access to Member Only information, including a member directory.

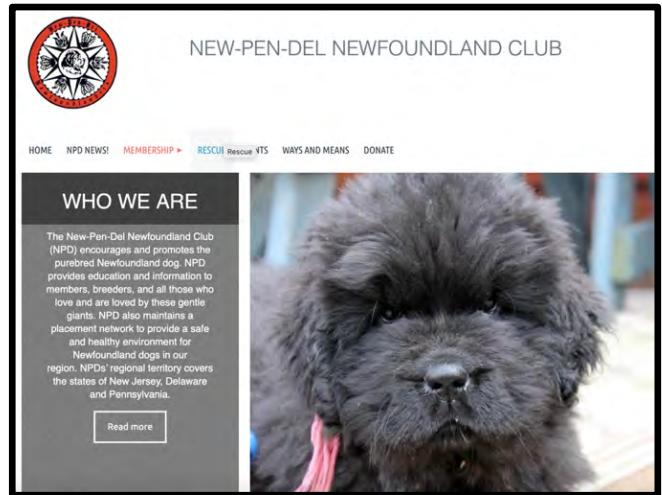
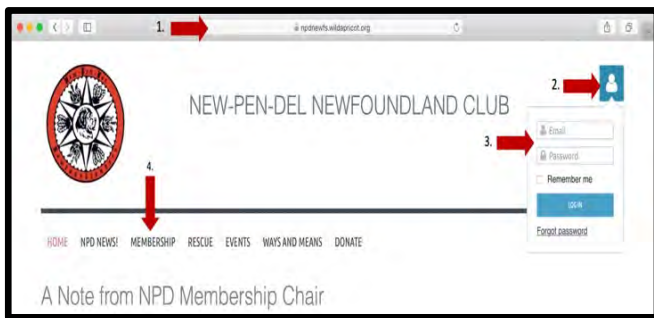


ACCESSING THE MEMBER PORTAL...

How to Login to the Portal

There are several steps to login to the Membership Portal. Follow the steps on the diagram below to enter your email and password. The *Members Only* section of Portal is under the Membership menu tab.

If you need assistance, please email Amy Kroeger (aim72@comcast.net)



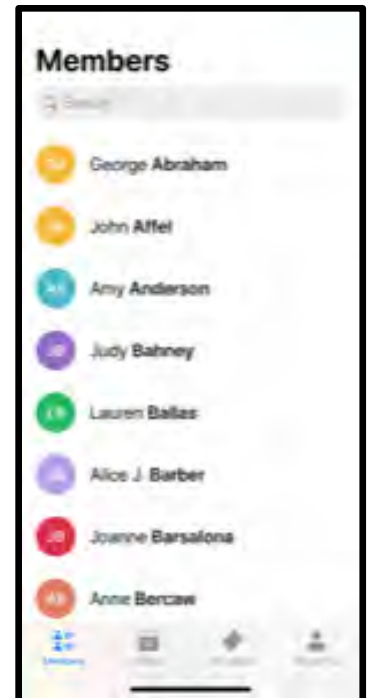
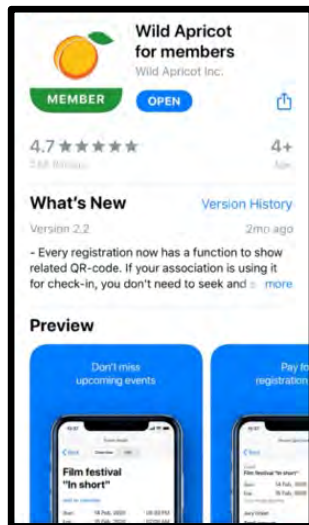
Using the Wild Apricot App to access the Members Directory...

After you download the Wild Apricot App for Members, login using the same credentials you use to login to the Members Only part of the Portal. Open the app and click on Members at the lower left-hand corner of the page.

You will now see a list of all NPD Active members. Search and find the member you would like to contact.

Download the Wild Apricot for Members App on your Smartphone

Go to the App store on your iPhone or Android device and download the Wild Apricot for Members app.



NPD NEWS!

NEED SOME NEW WATER TRAINING SWAG?

Support NPD's 2021 Water Test

Shopping Link: www.redbubble.com/shop/ap/85165529

PIC•COLLAGE

<https://www.redbubble.com/shop/ap/85165529>



<https://teespring.com/stores/new-pen-del-newfoundland-club>



POOCH PANTRY

NPD continues to offer the Pooch Pantry to members in need of financial assistance for their dogs. Please visit our website for more information.

<https://npdnews.wildapricot.org/Pooch-Pantry>





TRAILS & TRAILBLAZERS AT WINTERTHUR MUSEUM AND GARDENS

BY: KAT LYNN, NPD EDUCATION CHAIR

NewPenDel had the honor of participating in a special event at the Winterthur Museum and Gardens (a DuPont Estate property) in Winterthur Delaware on Saturday, June 5. The special event celebrated “Trails & Trailblazers” – particularly Lewis & Clark and their Newfoundland dog Seaman.

Eight (8) Newfs and their people provided public education and plenty of “hands-on” interaction about Newfoundland dogs as well as their diverse and varied talents and abilities. They discussed general breed qualities and traits and linked many breed specific talents that would have made this breed of dog a true partner and working companion on an expedition like Lewis & Clark’s.

Winterthur patrons had opportunities to meet and interact with all the dogs, as well as ask questions and gain information. They also watched a carting demonstration done by Henry [Lynn] and discussed water rescue training and obedience training. Bella [Costello] demonstrated her abilities as a Certified Service Dog and Therapy dog. Hope, Jake, Marcus, Henry, Bella and Agatha all represented AKC Champions. Wellington helped discuss Newf Rescue and ALL got the chance to showcase their remarkable temperaments!

Winterthur’s patrons varied from the smallest 2-year-old to Senior Citizens. The dogs all served as remarkable representatives of the versatile Newfoundland breed and brought joy (and crowds!) everywhere they went. It was a wonderful, educational day filled with great people and amazing dogs! Special thanks to all the NewPenDel members who shared their dogs and knowledge: John Affel, Joe and Jo Barsalona, Chris and Marissa Lavigna, Mary and Dan Costello and Mary’s Mom Rosa. Many thanks to the amazing staff at Winterthur Museum and Gardens for inviting us to participate! NewPenDel is always excited to share our knowledge and remarkable dogs and is grateful for opportunities like this to do so at such an amazing venue as Winterthur.

NEW-PEN-DEL



NEW-PEN-DEL



NEW-PEN-DEL



NEW-PEN-DEL NEW-PEN-DEL WATER TRAINING

New Pen Del is pleased to offer various water training opportunities.

For Additional Information & Rules, visit:

<https://npdnewfs.wildapricot.org/Water-Training-Rules/>

For information on specific training sites or to get information regarding attending specific training sessions, please contact the following site coordinators.

Participants must register prior to attending.

Round Valley Reservoir, Lebanon, NJ:

<https://npdnewfs.wildapricot.org/event-4352318>

- 2 Sep 2021, 9:00 AM – 1:00 PM

Amy Supko

dael@embarqmail.com

862.268.1861

Liberty Lake Day Camp, Bordentown, NJ:

<https://npdnewfs.wildapricot.org/event-4351190>

(\$25 Drop-In Fee Applies)

- 5 Sep 2021, 9:00 AM – 1:00 PM
- 12 Sep 2021

Ana Peraza Kroeger

anaperaza@comcast.net

908.553.6596

Tobyhanna State Park, Tobyhanna, PA:

<https://npdnewfs.wildapricot.org/event-4352340>

- 24 Aug 2021, 9:00 AM-1:00 PM
- 7 Sep 2021

Please contact both:

Karen Doman

kqdoman@frontier.com

215.534.3206

&

Robert Gerri

ctbobber@gmail.com

718.637.7105



Colonial Newfoundland Club has graciously invited our members to train at their Open Swim dates listed below.

Please coordinate with the Colonial Club to attend their events.

<https://www.cncnewfs.com/Home.shtml>

Open Swim Dates at Codorus 2021

Codorus Park, PA

August 25 Wednesday

August 28 Saturday

August 29 Sunday (Vacate Area Before 4 PM)

September 1 Wednesday

NEW-PEN-DEL

NEW-PEN-DEL WATER TRAINING

TOBYHANNA STATE PARK WATER TRAINING



Tobyhanna training is underway and going smoothly. The training group has been able to use a boat thanks to George Abraham, who built a platform. Sign up on our website to join the fun.

LIBERTY LAKE - BORDENTOWN WATER TRAINING



Our NJ Training site is being enjoyed by a wonderful group, with a lot of first-time training teams and puppies. It's been so fun to watch them learn new skills. Drop in spots are still available.

NEW-PEN-DEL

NPD WATER TEST
 BELTZVILLE STATE PARK, LEHIGHTON, PA



September 17
 WRD Requals & WRDX
September 18
 WD, WRD
September 19
 WD, WRD, WRDX

All Breed
September 18
 WD, WRD
September 19
 WD, WRD, WRDX

JUDGES: MARK & CASSIE IKEN

NCA MEMBER ENTRIES ACCEPTED USING THE NCA ONLINE ENTRY SYSTEM AT [HTTPS://WWW.NCANEWFS.ORG/WDC/](https://www.ncanewfs.org/wdc/) OR BY MAIL WITH A LEGIBLE POSTMARK NO EARLIER THAN JULY 19, 2021.

NON-NCA MEMBER ENTRIES ACCEPTED BY ONLINE ENTRY OR BY MAIL TO BE POSTMARKED NO EARLIER THAN JULY 29, 2021.

ENTRIES CLOSE AT 5 PM ON AUGUST 25, 2021. SEE LINK BELOW FOR PREMIUM.

<https://npdnewfs.wildapricot.org/event-4381768>

Test Chair:
 Karen Doman
kqdoman@frontier.com

Test Secretary:
 Andrea Ottey
andiaho@aol.com

Chief Steward:
 Karin Bystol
ikbzmommy@gmail.com

Please consider volunteering to help. Experience is not required! Stewarding a test is a great way to learn about water work. Please contact, the Chief Steward, Karin Bystol if you can help.



water test RAFFLE



ENTER FOR A CHANCE TO WIN!

WATER TRAINING ARTICLE BAG

Handmade and generously donated by SewNewf's Karin Bystol

<https://www.sewnewfdesigns.com>

Tickets are 1 for \$5 and 5 for \$20



This is a giant bag! It fits all water training equipment! Including: life ring, paddle, life vest article, cushion article, handler life vest and water shoes, canine float coat, WRDX gloves, take a line rope, tow a boat line, 6 bumpers, extra long line, splunky/ knobby wobbly, and there is room for more!

Filled dimensions are 75 inch circumference, 31 inches tall and 26 inches wide.

Exterior is waxed canvas with grommet holes for airflow. Interior lining is made of waterproof mesh and ripstop nylon. Also inside is a plastic mesh zippered divider pocket to keep all your equipment neatly contained.

The exterior of the bag features a Newfoundland applique in waxed canvas on a slip pocket. The bag also contains an interior mesh pocket for smaller articles like bumpers.

This amazing bag will be available for auction at the NPD 2021 Water Test on September 17th - 19th. **Contact Euny Warren at Eunyhwan@gmail.com to buy your raffle tickets!**

NEW-PEN-DEL REGIONAL SPECIALTY

ENTRIES NOW OPEN AND ARE LIMITED TO 5000!
KEEP AN EYE ON INFODOG AND THE NPD FB PAGE FOR UPDATES.

THE GOLDEN AGE OF DOG SHOWS



NEW PEN DEL NEWFOUNDLAND CLUB
IS HOSTING AN
NCA REGIONAL SPECIALTY
AT THIS PRESTIGIOUS AND HISTORIC SHOW
COLONIAL PARK | SOMERSET, NJ

WEDNESDAY
OCTOBER 6TH

SWEEPSTAKES JUDGE:
LAURA VANDEVEN

BREED JUDGE:
JOHN CONSTANTINE AMODEI

AMAZING TROPHIES
CLASSES
GLITTERBOMB TROPHIES
TOP AWARDS
EMBROIDERED DIRECTOR'S CHAIRS

FOLLOW NEW PEN DEL'S FACEBOOK PAGE
FOR EVENT RAFFLES AND MORE INFORMATION.

3 ALL-BREED SHOWS

WILL FOLLOW MORRIS & ESSEX:

OCTOBER 7TH -
OCTOBER 8TH 2021
HATBORO KC

OCTOBER 9TH 2021
DEVON KC

OCTOBER 10TH 2021
MONTGOMERY KC
ALL TERRIER SHOW...
A SIGHT TO BEHOLD..

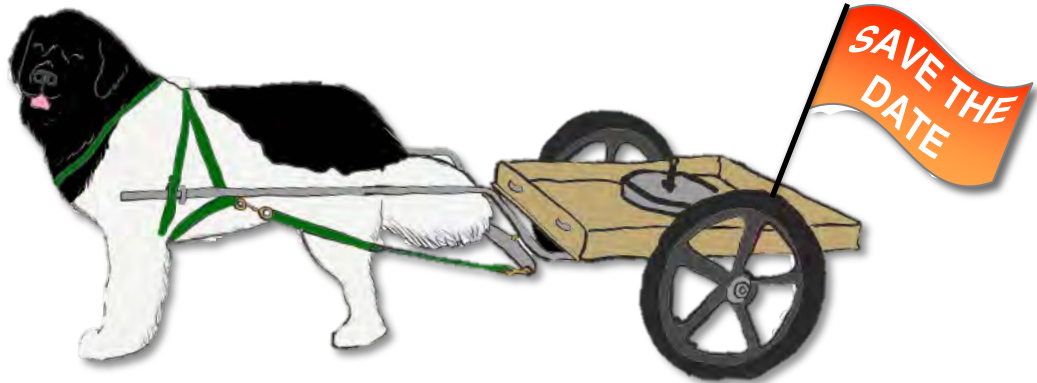
The Morris & Essex Kennel Club Dog Show occurs only once every 5 years! It pays homage to the early days of dog shows and the tradition created by Geraldine Dodge. Part of the tradition has been to dress in period clothing (early 1900s). Hats are a must !!!

MORRIS & ESSEX KENNEL CLUB DOG SHOW

NEW-PEN-DEL



**NEW-PEN-DEL
2021 DRAFT TEST**



OCTOBER 16TH & 17TH 2021

Brubaker Park
East Earl, PA

**OFFERING ALL THREE LEVELS OF DRAFT
BOTH DAYS**

- New BDD - Beginner Draft Dog
- Draft Dog – DD
- Draft Dog Excellent – DDX
- Team Draft Dog – TDD
- Team Draft Dog Excellent - TDDX

Questions???

Contact:

Amy Supko

dael@embarqmail.com

(862) 268-1861

JUDGES

Donna Thibault from CT
Gary Walker from MO

******PREMIUM OUT IN AUGUST******

Please consider volunteering to help. It takes a lot of people to put on a draft test. We'll need stewards, including some to walk the 1-mile freight haul. Experience is not required! Stewarding a test is a great way to learn about carting with your dog. For more information about the draft test, including information on the new Beginner Draft Dog (BDD) Test and rules for all levels, please visit <https://www.ncanews.org/working/draft/>

FALL FUN FEST



SAVE THE DATE:



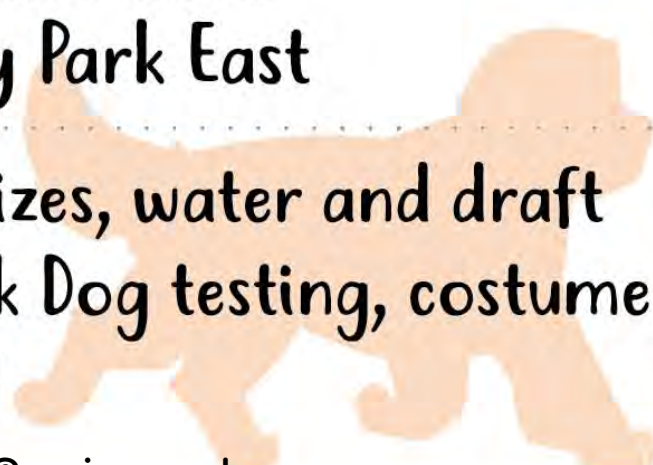
FALLFEST is BACK!

WHEN: Saturday October 30th

WHERE: Mercer County Park East

Food, fun, games, prizes, water and draft workshops, CGC/Trick Dog testing, costume contest... and more!!

Event Chair: John Affel, affelj@verizon.net



NEW PEN DEL CARDIAC CLINIC

SAVE THE DATE: NOVEMBER 2021

NEW PEN DEL WILL HOST A CARDIAC CLINIC IN NOVEMBER WITH A BOARD-CERTIFIED CARDIOLOGIST. WE WILL OFFER AUSCULTATION AND ECHO DOPPLER EXAMS.

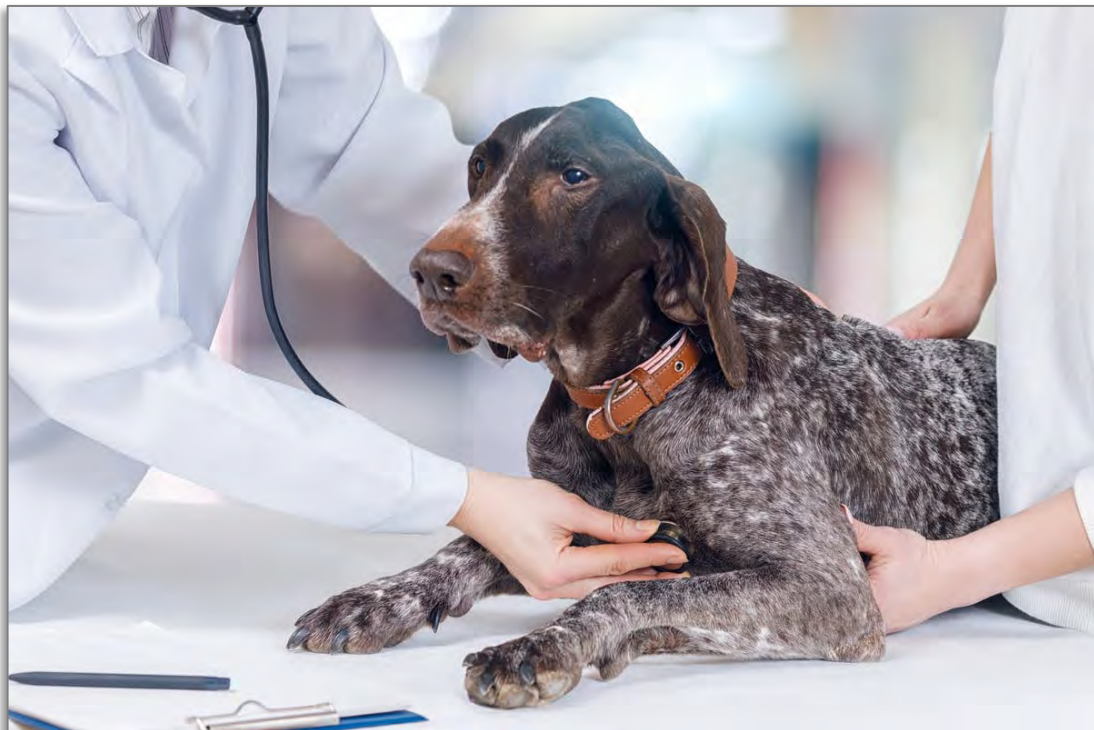
GREAT OPPORTUNITY FOR LITTERS TO BE CLEARED OF CARDIAC ANOMALIES. ADULTS 12 MONTHS AND OVER CAN BE EVALUATED FOR OFA CERTIFICATION.

August Health Initiative: Canine Heart Health

Our August Health Initiative is all about canine heart disease and how to help your dog stay heart healthy!

By Dr. Judi Stella, PhD, Dr. Nate Ritter, DVM, and Dr. Mikel Maria Delgado, PhD

<https://www.gooddog.com/good-breeder-center/canine-heart-health>



NEW-PEN-DEL

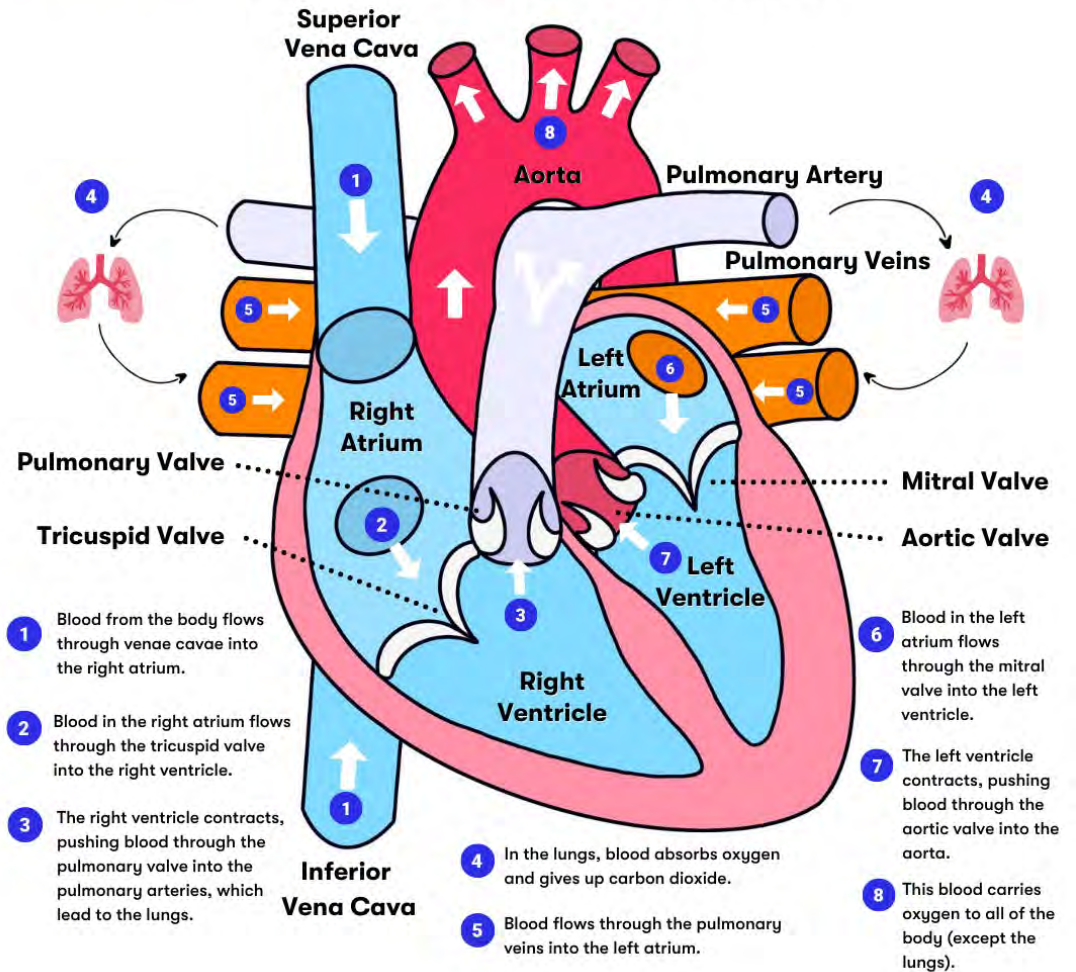
Heart disease in dogs can be present from birth or can arise later in a dog's life. Any dog can get heart disease, but some breeds may be predisposed. When diagnosed early and managed, many dogs with heart disease can live a long and happy life! Annual screening is important for at-risk breeds.

Signs of Heart Disease include:

- Coughing and difficulty breathing
- Fainting
- Fluid retention in the belly
- Sudden changes in behavior
- Fatigue
- Restlessness

good dog

The Canine Heart



NEW-PEN-DEL

Diagnosing Heart Disease

At your dog's yearly check-up, your veterinarian will listen to your dog's heart. If issues are suspected, your dog may need additional testing such as:

1. Chest x-rays to measure the size of the heart and check for fluid in the heart and lungs.
2. ECG to check for irregular heartbeats.
3. Echocardiogram, an ultrasound of the heart, which can measure health and function, including the shape of the heart and abnormalities.

Common Types of Heart Disease

Mitral Valve Disease (MVD): Often the cause of a heart murmur. The valves of the heart weaken leading blood to leak into the heart instead of out to the body.

Canine Dilated Cardiomyopathy (DCM): The muscles of the heart are too weak to pump blood. DCM can be genetic, or caused by infection or nutritional deficiencies.

Subaortic Stenosis (SAS) and Pulmonic Stenosis (PS): The valves of the heart narrow, obstruct blood flow and cause the heart to pump harder.

Arrhythmias: Irregular rhythms in the heartbeat. Arrhythmias can sometimes lead to more serious heart problems.

Pericardial effusion: The sac (pericardium) around the heart fills with fluid. Pericardial effusion is often an emergency.

Prevention & Treatment

Most forms of heart disease are irreversible but can be managed. It's important to work closely with your veterinarian or veterinary cardiologist.

Regular physical exercise and veterinary examinations are excellent ways to prevent heart disease and catch early warning signs. If your dog is a breed known to be at risk, talk to your veterinarian about how to help your dog stay heart-healthy.

AUGUST HEALTH INITIATIVE



Canine Heart Health

Heart disease in dogs can be present from **birth** or can arise **later** in a dog's life. Any dog can get heart disease, but some breeds may be **predisposed**.

When **diagnosed early** and managed, many dogs with heart disease can live a long and happy life! **Annual screening** is important for at-risk breeds.

Signs of Heart Disease in Dogs

- ➔ Coughing and difficulty breathing
- ➔ Fainting
- ➔ Fluid retention in the belly

Signs of heart disease can have a sudden onset.

- ➔ Sudden changes in behavior
- ➔ Fatigue
- ➔ Restlessness

How is Heart Disease Diagnosed?

At your dog's annual exam, your veterinarian will ask about their **behavior at home**, do a complete **physical exam** and listen to their heart. If any abnormalities are found, your dog may need **additional testing** such as:

1. Chest x-rays to measure the size of the heart and check for fluid around the heart or in the lungs
2. ECG to check for irregular heartbeats
3. Echocardiogram, an ultrasound of the heart, which can measure structure and function

Common Types of Heart Disease

Disease	Description	Breeds Most At-Risk
Mitral Valve Disease (MVD)	Often the cause of a heart murmur. The valve weakens, resulting in blood flowing in the wrong direction.	Cavalier King Charles Spaniels, Miniature poodles, Shih Tzu, Maltese, Chihuahua, etc.
Dilated Cardiomyopathy (DCM)	The muscles of the heart become stretched thin, and too weak to effectively pump blood. Predisposing factors include genetics and nutrition	Boxers, Doberman Pinscher, and Great Danes, etc.
Subaortic Stenosis (SAS) and Pulmonic Stenosis (PS)	The valves of the heart narrow, obstruct blood flow and cause the heart to pump harder.	PS in some terriers and brachycephalic dogs SAS in large-breed dogs
Arrhythmias	the heart beats with an irregular or abnormal rhythm. They can range from harmless to fatal	Arrhythmias can have breed associations, such as the ventricular arrhythmia, found in German Shepherds, Boxers and Bulldogs.
Pericardial effusion	The sac (pericardium) around the heart fills with fluid. Pericardial effusion is always an emergency.	German Shepherds, Boxers, Golden Retrievers, etc.

Treatment

- ➔ The most common forms of heart disease are irreversible but can be **managed**.
- ➔ **Medications or surgery** may improve the function of the heart.
- ➔ Work closely with your **veterinarian** or veterinary cardiologist.

Reduce the Risk

- ✔ Feed a **balanced diet**.
- ✔ Schedule regular **veterinary examinations**.
- ✔ **Screen** all breeding animals for heart disease as recommended by your breed club.



NEW-PEN-DEL

The OFA maintains multiple databases to gather data regarding heart diseases in dogs, and to identify dogs which appear to be clinically normal prior to use in a breeding program.

August Health Initiative

OFA Basic Cardiac Evaluation Procedure

The OFA maintains multiple databases to gather data regarding heart diseases in dogs, and to identify dogs which appear to be clinically normal prior to use in a breeding program. The Basic Cardiac Evaluation screens dogs for congenital cardiac disease.

Congenital heart disease in dogs is a malformation of the heart or great vessels. Many congenital heart defects may be genetic, but the exact modes of inheritance are not always known.

Basic Cardiac Evaluation Procedure

- Any licensed veterinarian can perform a basic cardiac evaluation.
- Create an appointment with your veterinarian. The basic cardiac evaluation can also be part of an annual physical.
- Download, print, and bring the OFA form to your appointment

- Your veterinarian will do an auscultation (listen to the heart with a stethoscope).
- Your veterinarian will complete and sign the application form for OFA with the results.
- You send the completed form and the associated fee to the OFA.

OFA Advanced Cardiac Evaluation Procedure

The OFA maintains multiple databases to gather data regarding heart diseases in dogs, and to identify dogs which appear to be clinically normal prior to use in a breeding program.

Advanced Cardiac Evaluation Procedure

- Create an appointment with a veterinary cardiologist licensed by the American College of Veterinary Internal Medicine (ACVIM) or the European College of Veterinary Internal Medicine (ECVIM).
- During the examination, they will listen to your dog's heart with a stethoscope (auscultation). Next, they will do an echocardiogram, (an ultrasound of the heart).
- The veterinary cardiologist will fill out a form indicating the results of the examination. You will submit the form and a fee to OFA.

There are two levels of clearance for the advanced screening:

- 1** Congenital cardiac clearances (considered permanent).
- 2** Adult-onset cardiac clearances (only valid for 1 year and must be repeated annually).

Note: Boxers and Doberman Pinschers also require a Holter test for an adult-onset cardiac clearance.

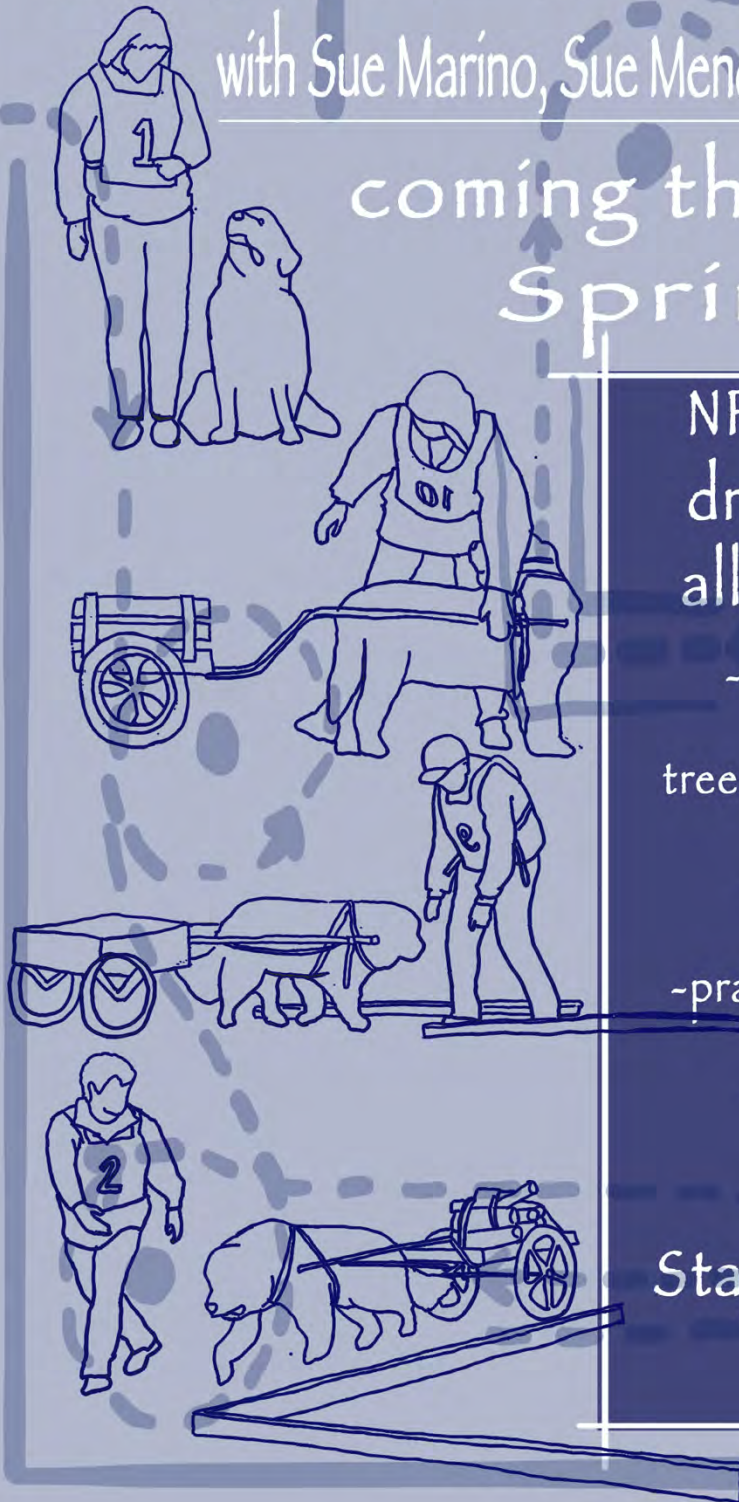
Note: Clearances through OFA are only given to dogs 12 months of age or older. Owners are welcome to test younger dogs, but these preliminary evaluations will not be issued a number in the database.

good dog

DRAFT WORKSHOP

with Sue Marino, Sue Mendleson and Todd Bennett

coming this
Spring 2022



NPD is planning a
draft workshop...
all levels welcome!

- learn how to cart for events such as:
tree pulls, parades, or trick or treating
- learn harnessing & hitching
- practice maneuvering course
- get ready for NCA Draft Test
- and much more...

Stay tuned for more
details

Line Combing Your Double Coated Breed

Posted on: March 29, 2021

By: Author Jen, My Brown Newfies Blog <https://mybrownnewfies.com>

THE BENEFITS OF



LINE COMBING YOUR DOG

When you have a dog that has a [double coat](#) there's a lot of work that goes into maintaining that coat. Not only do you have to keep the guard hairs (topcoat) looking nice and shiny but you also have to keep the thick hair underneath healthy.

That may sound like a simple task but when you have a giant breed dog that has a very thick undercoat it can be very labor-intensive and time-consuming if you choose to handle all of your dog's grooming needs.

Line combing or line brushing is the most common way that dog groomers and owners of double-coated dogs maintain their dog's coat.

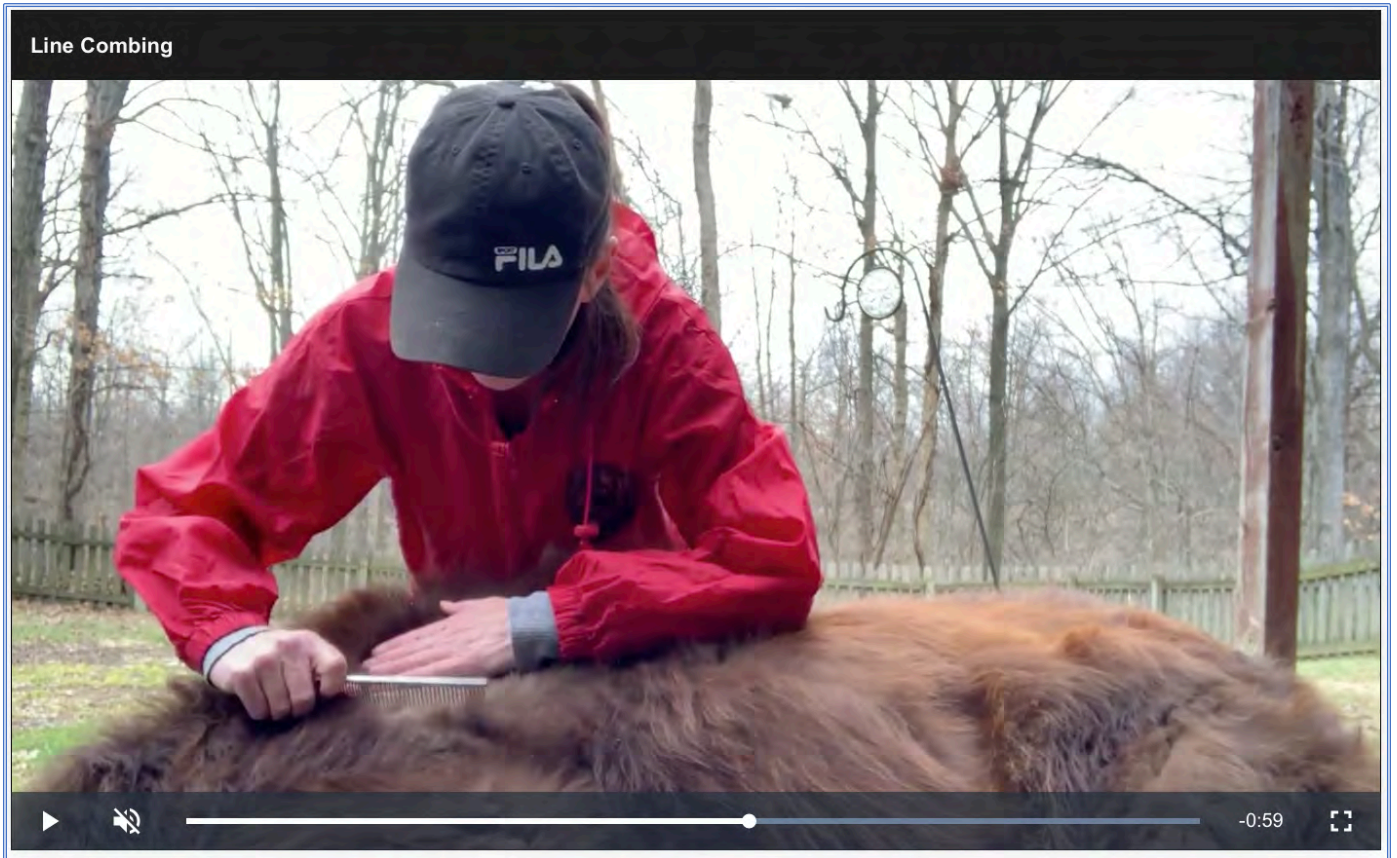
What is line combing?

Line combing or line brushing is a grooming technique used on dogs with a double coat to remove loose undercoats. Line combing or line brushing is different than just running a dog brush on the top of your dog's coat which does nothing for the undercoat.

Benefits of line combing

The benefits of line combing are huge and mandatory when you have a dog that has a double coat. Removing the loose undercoat with a comb reduces mats that can pull at the skin and be painful for the dog. It allows the air to flow through the skin and it can reduce hot spots from forming.

Line combing also gives you a chance to assess the skin of the dog and make sure that it is healthy and free from skin infections and parasites such as fleas and [ticks](#).



https://mediavine-res.cloudinary.com/video/upload/sp_mediavine_hd_h264/v1553128066/gdeui3vri5dnthpexpgh.m3u8

How to line comb

If your dog is standing, start at the bottom and work your way up. You should pick either start at the front or the back of the dog and not in the middle. Lift the hair up with your non-grooming hand and comb the hair in a downward motion making a line.

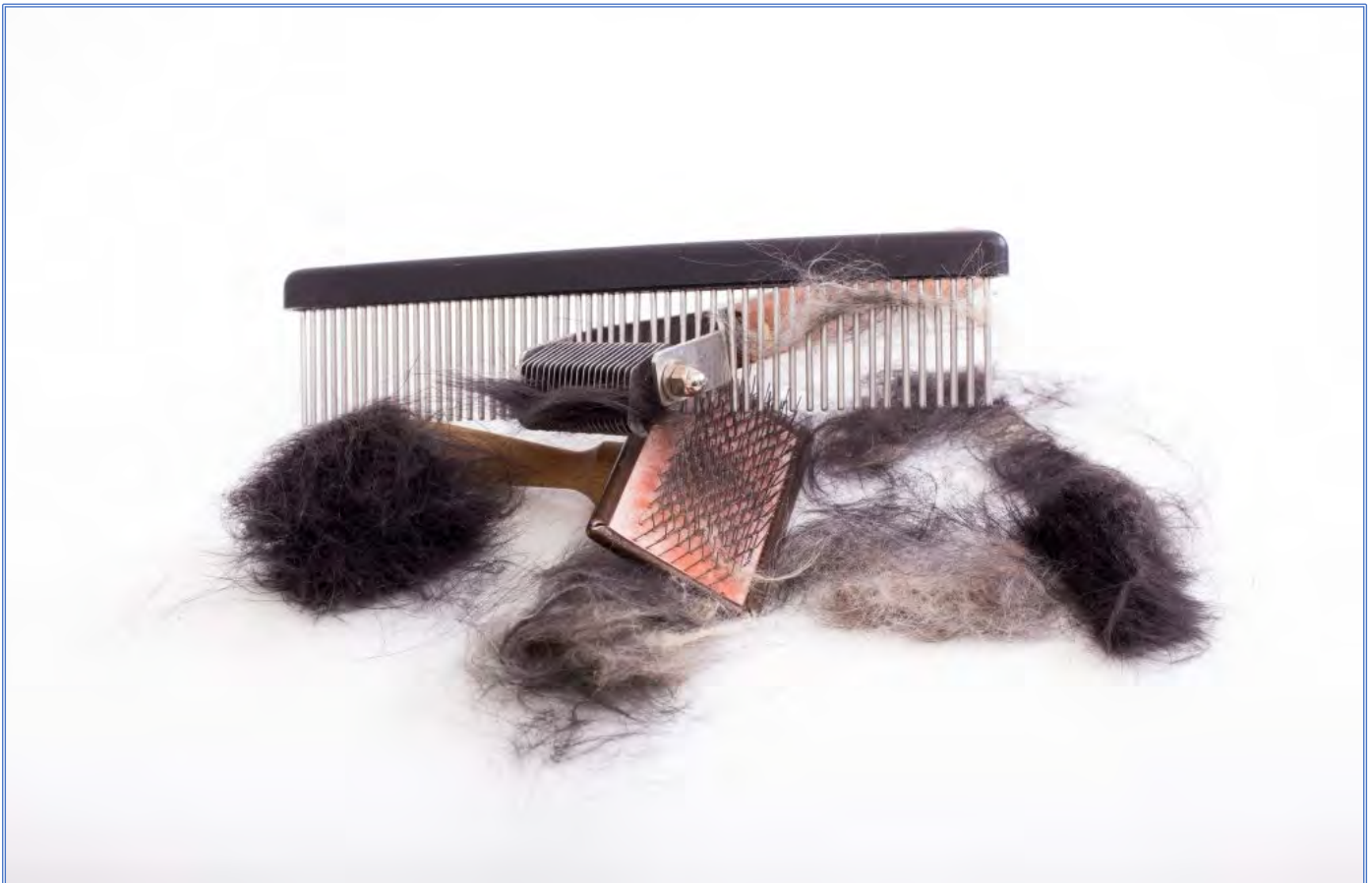
The size of the section is going to vary on the size of your dog and the size of your hand. I have small hands and a big dog so my sections are about 6 inches if I'm using a portion of my forearm. Your goal is to see a line from where the hair meets the skin. If you don't see the skin at first, comb through until you do.

NEW-PEN-DEL

How often to line comb

In an ideal world, it would be great to line comb daily but many people can't do that. Line combing a double coat once a week should be good for most dogs but during the times when a dog is [blowing coat](#), it should be combed daily in order to cut down on mats and to remove the loose hair.

Line combing should also be done after bathing and after swimming to help prevent hot spots.



What type of comb to use

This will be largely based on personal preference and your dog's coat. For a thicker coat, a comb normally works best. You can use a [greyhound comb](#), a [poodle comb](#), a wide-tooth comb, a comb with a handle or a comb without a handle. You can also use a rake, a slicker brush, a [Sullivan comb](#) or a [Scotch comb](#).

I personally like to use a greyhound comb when line combing. I love the new scotch comb that I bought at Tractor Supply but it is heavy and can be wearing on the wrist when line combing.

NEW-PEN-DEL

For hair that is knotted, hard to pass through or has a lot of static a grooming spray such as [The Stuff](#), [Ice on Ice](#), [ProGro](#), [Pangagenics](#) or [Cowboy Magic](#). ProGro is my all-time favorite when diluted down into a spray bottle but the others work great too!

After line combing, make sure to clean your grooming tools in warm, soapy water and allow them to air dry.



DOGS EATING CICADAS: TASTY TREAT OR TROUBLE?

<https://www.akc.org>

By [Harriet Meyers](#)

Mar 04, 2021

- After a 17-year hibernation, trillions of cicadas are due to emerge in parts of the U.S.
- Cicada exoskeletons are difficult to digest and can cause dogs to suffer serious consequences if eaten.



Sometime this spring, when the soil temperature reaches 64 degrees, your dog may suddenly start digging up the yard. He can hear something you can't yet hear – juvenile cicadas tunneling through the ground getting ready to emerge.

Most of the more than 3,000 types of cicadas appear every 2-to-5 years, and their cycles can vary. But the periodical cicadas spend exactly 13 or 17 years underground, and when they appear – trillions surface, blanketing the ground, cars, trees, and houses. According to entomologists, densities can be as great as 1.5 million cicadas per acre.

This time the big brood is coming. After a 17-year hibernation, trillions of cicadas are due to emerge in Delaware, Georgia, Illinois, Indiana, Kentucky, Maryland, Michigan, North Carolina, New Jersey, New York, Ohio, Pennsylvania, Tennessee, Virginia, West Virginia and Washington, D.C.

NEW-PEN-DEL

Cicadas Can Cause Stomach Upset

Cicadas don't bite or sting, so no problem – right? Wrong. If you have a dog who likes to munch on whatever can be found on the ground, you need to prepare to stop him from devouring this plentiful treat.

“In most cases, your dog will be fine after eating a few cicadas,” says Dr. Jerry Klein, AKC chief veterinary officer. “However, dogs that gorge on the large, crunchy insects will find the exoskeleton difficult to digest and can suffer serious consequences.”

According to Dr. Klein, aftereffects can include severe stomach upset and abdominal pain, [vomiting](#), and bloody [diarrhea](#). Some dogs may require intravenous fluids, pain medications, gastroprotectants, or anti-nausea drugs.

Dogs Overindulging in Cicadas Can:

- Experience mild to serious GI upset.
- Choke on the stiff wings or hard exoskeleton.
- Suffer an [allergic reaction](#).
- Consume unhealthy amounts of pesticides.

How Long Will the Threat Last?

Cicadas live underground for most of their lives, where they drink from plant roots and develop into adults. They emerge from the ground to sing, mate, and lay eggs. The songs, sung mostly by males, can reach 100 decibels. Females lay fertilized eggs in the branches of plants, where they hatch and burrow underground. The adult cicadas die, and the world becomes a little bit quieter.

The cicada cycle will last about 6 weeks, so those emerging in mid-May should be gone by late June, depending on the weather. Then the babies or nymphs will dig into the ground to suck tree roots for another 17 years.

Of course, those tasty exoskeletons that adult cicadas shed will still be all over the ground. So you'll need to be vigilant with your dog for a while longer.

Bottom line: Preventing your dog from eating cicadas is the safest choice. Get ahead of the game and teach the [“leave it”](#) command. And if you have a pup who likes to act like an anteater, you may need to be constant companions when he goes outside for a couple of months.

GASTRIC DILATATION AND VOLVULUS (GDV)

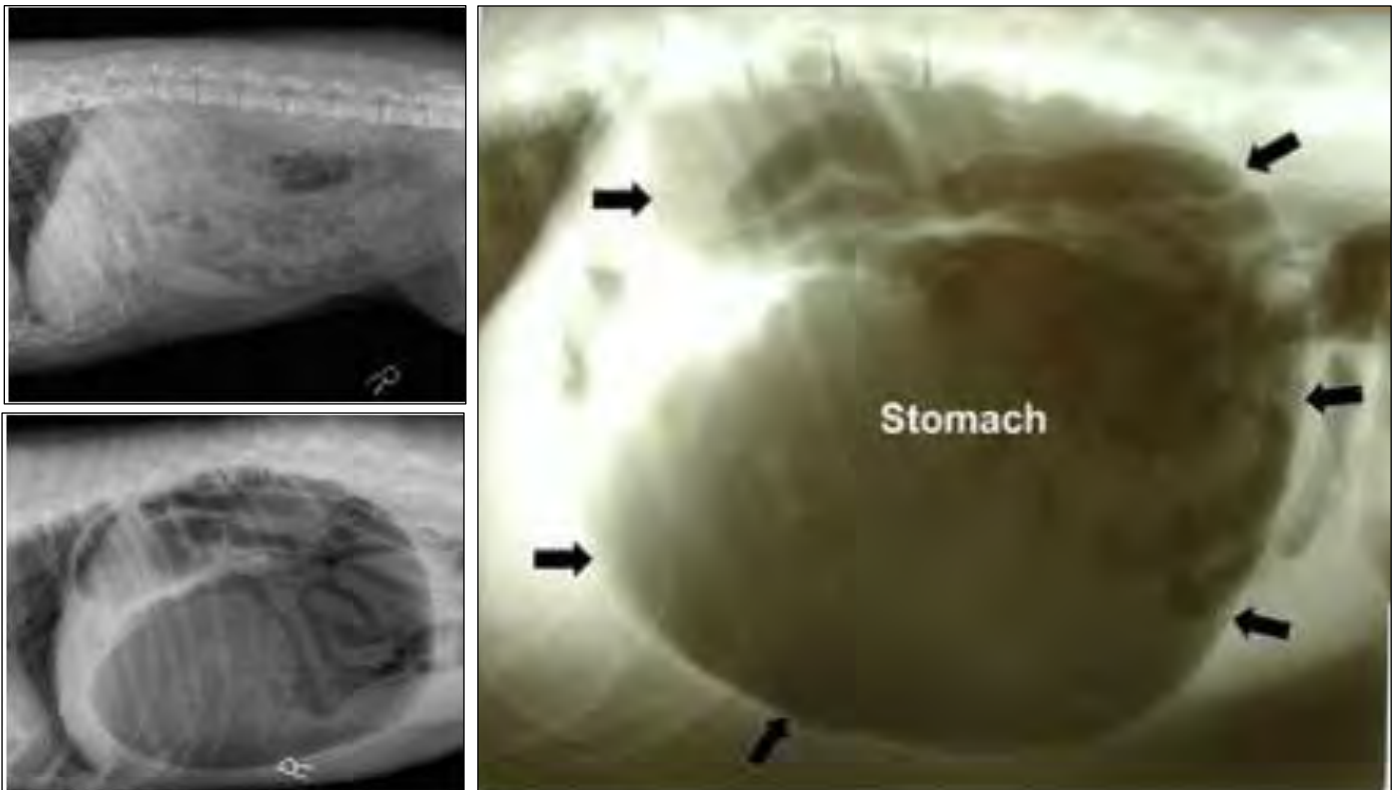
By: Larissa Patterson
 Presented by: Dr. John O'Neill
 Gold Cup Newfoundlands

Common Breeds

- Newfoundlands
- German Shepherds
- Standard Poodles
- Great Danes
- St. Bernards
- Labradors

Canine dilatation and volvulus, also known as bloat, is a serious life-threatening condition that is fatal if left untreated.

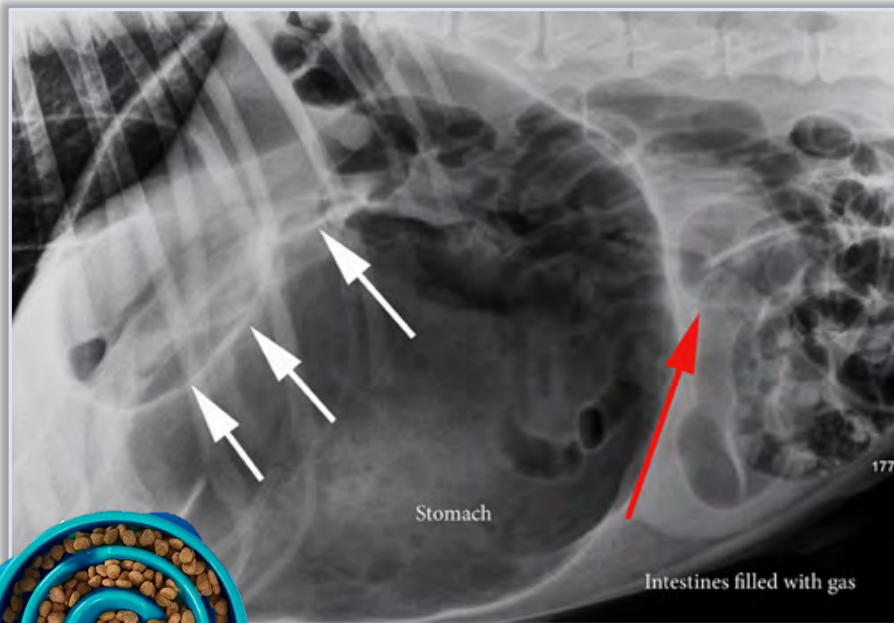
Gastric dilatation is when the stomach dilates and maintains its normal position. Dogs are usually able to relieve this pressure by vomiting or belching.



Right lateral is the best view to confirm GDV. The pylorus is displaced cranially and dorsally to the fundus. The stomach rarely turns in a counter-clockwise direction.

NEW-PEN-DEL

What Happens to the Stomach?



Gastric dilatation and volvulus is when the stomach dilates then rolls or twists, closing off openings leading in from the esophagus and out to the intestines, so the pylorus, or lower portion of the stomach, ends up lying alongside the left body wall.

If the stomach twists enough, the spleen and major blood vessels in the area twist as well. This can cause a loss of blood flow to the stomach and other abdominal organs causing tissue damage.



Higher Risks

- Dogs over 7 years old
- Males are twice as likely as females
- Dogs that tend to be more nervous, anxious, or fearful
- Dogs that are fed once a day are at a higher risk than those fed twice a day.
- Dogs that inhale their food too quickly
- Dogs that exercise too soon after eating.



Prevention

There are many theories on how to prevent GDV, however they are just theories.

Owners of high-risk breeds should consider prophylactic gastropexy, which involves tacking the stomach to the body wall. This prevents the torsion.



NEW-PEN-DEL

MEET OUR CANINE MEMBERS!



Meet
PENNINGTON

This is Pennington. Her birthday is November 7th 2012 . She has her beginner novice title, her Rally novice title and her CGC . She has acted in several commercials and a TV show! Her favorite thing to do is swim!

Owned by: Sue Ryan



Meet
EDNA



This is Edna hoping to see a squirrel. She was born September 19, 2017 and came to live with us and her brother Wilbur in 2019. Now she has a new friend Hickory who is an English Springer Spaniel. If you're walking in Island Heights, NJ please stop by and say hello.

Owned by: Von and Nancy Worthington

MEET OUR CANINE MEMBERS!



Meet **WHITNEY**

This is Whitney.
She loves getting hugs from little people!
Owned by: Chris Lamuraglia, Peggy Helming & Euny Warren



Meet **RONIN**

This is Ronin.
Lifeguard on duty!
Ronin likes to keep a close eye on Gareth!
Owned by: Bruce and Karen Doman



NEW-PEN-DEL

BRAGS & WAGS!

Congratulations!



Gold Cup's "It's Not A Pyramid Scheme" RAMÒN
Owners: Cathy Wisniewski & Zach Rosario

NEW-PEN-DEL



BRAGS & WAGS!

New Champion

Ch. Pouch Cove's Moment in Time
(Whitney)



Whitney's Owners: Chris LaMuraglia, Peggy Helming and Euny Warren

NEW-PEN-DEL

BRAGS & WAGS!



Congratulations!

Select

Best of Opposite

Ethan & Whitney



Ethan's Owners: Donna Campbell & Peggy Helming
Whitney's Owners: Chris LaMuraglia, Peggy Helming and Euny Warren

NEW-PEN-DEL

BRAGS & WAGS!*Congratulations!*Threeponds Remember the Ladies, CD BN
RN CGC TKI (Abby)

Abby, who is not yet a champion, got a Group 3 at the Union County Kennel Club Dog Show in a group of 200+ working dogs. We were so excited and grateful to our newfie family for sharing the moment with us. Special thanks to Lexie Ditlow for handling Abby and bringing out the best in her. Owners: Ana and Amy Peraza Kroeger

NEW-PEN-DEL

IN MEMORIAM

Remembering Raul



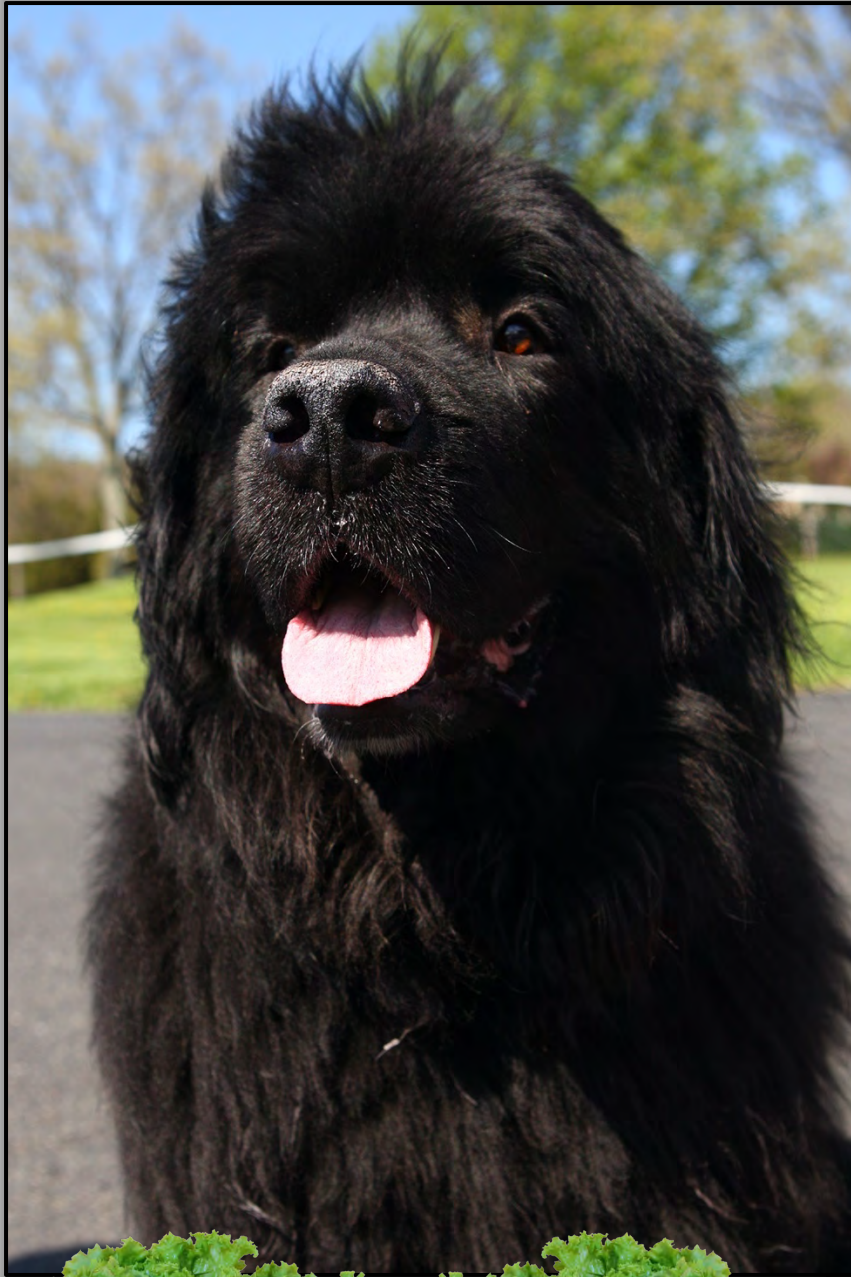
Our thoughts are with Cathy Wisniewski, Zach Rosario, sister Roxy and baby brother, Ramon.

NEW-PEN-DEL

IN MEMORIAM

Remembering Fezzik

Jan 21, 2010 - April 16, 2021

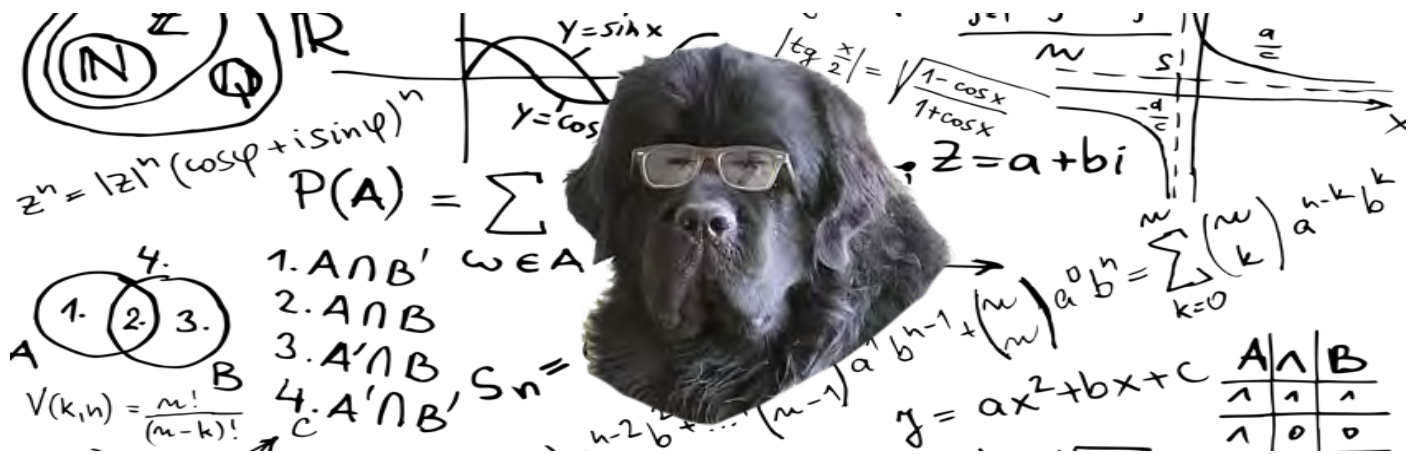


After falling in love with Newfs, I purchased Fezzik from Gold Coast. I was lucky to have been chosen to share my life with such a wonderful ambassador for the breed. Fezz attended many volunteer events for both a dog and cat rescue (ARF) and a horse rescue (Milestone Equine Rescue). He was also a great brother for many foster pups that came through our house. Not only did he make a lot of money in donations, but he made a lot of friends. After 11 years, his big heart gave out unexpectedly. While I reeled from the loss, I take comfort that he knew he was loved, and he loved me more than all the treats in the world (or lettuce...he loved lettuce). I'm not sure who's quote this is but it rings true. **"Don't cry because it's over. Smile because it happened."**

Cheryl Kavka



HOW WELL DO YOU KNOW THE NEWF?



TAKE NCA'S QUIZ AND FIND OUT!

<https://www.surveymonkey.com/r/7ZHNH3Q>

1. The single most important characteristic of the Newfoundland breed is:

- size
- balance
- temperament
- coat

2. The coat of a Newfoundland

- has a coarse undercoat
- when rubbed against the nap, it tends to fall back into place
- has a outer coat that is soft and dense
- all of the above

3. In general characteristics and appearance, the Newfoundland is:

- moderately muscled
- medium in size
- heavily boned
- slightly bulky

4. The croup:

- slopes moderately
- slopes slightly
- has an extreme slope
- does not slope

NEW-PEN-DEL**5. The length of the muzzle from the tip of the nose to the stop is:**

- o equal to that from the stop to the occiput
- o less than that from the stop to the occiput
- o slightly more than that from the stop to the occiput
- o considerably more than that from the stop to the occiput

6. Disqualifications in the Newfoundland Standard refer to:

- o color
- o temperament
- o expression
- o size

7. Substance is determined by:

- o spring of rib
- o strong muscle
- o heavy bone
- o all of the above

8. The ears are:

- o large in size
- o triangular
- o posted at the tips
- o set well forward on the skull

9. Regarding the body:

- o the back is narrow
- o the topline is slightly sloping from the withers to the croup
- o the brisket reaches at least down to the elbow
- o the croup is level

10. Newfoundland in motion have:

- o good reach
- o strong drive
- o the impression of effortless power
- o all of the above



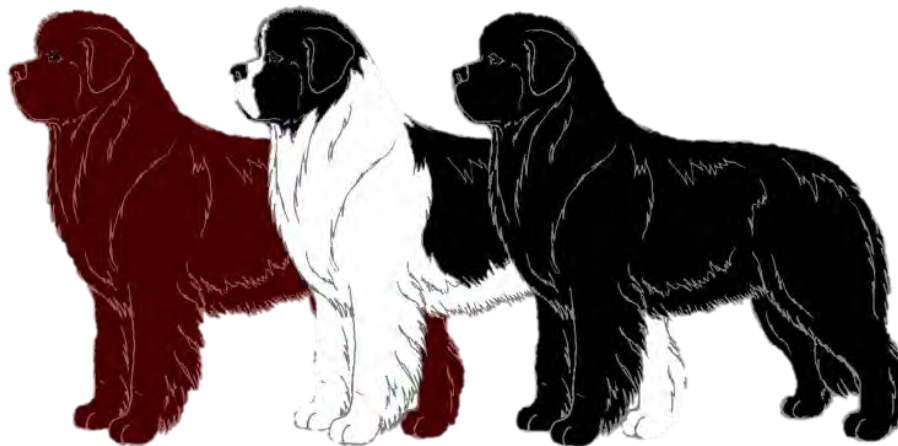
NEW-PEN-DEL



ABOUT THIS PUBLICATION

Bear Facts is a quarterly publication of the NewPenDel Newfoundland Club, a Regional Club of the Newfoundland Club of America, serving eastern PA, NJ, and DE. The articles published herein are for information and enjoyment of the membership and should not be considered endorsements of the Club. Articles of a medical nature reflect only the opinion of the writer and should not be taken as prescribing treatment. ***Always see your veterinarian before diagnosing and initiating any treatment.***

This is your newsletter. Your input is always appreciated. We welcome human-newf stories, brags, memorials, canine (especially Newf) interest articles, health/research articles, and photos of newf activities. We can accept virtually all formats from word processors & graphics packages. **Bear Facts will be issued on or around the 15th of the month, February, May, August and November. Submissions are requested by the end of the month previous to issue. Submissions for the next Bear Facts are due October 31st 2021.**

The easiest way to get us the information is via email to Ana Peraza Kroeger at npdbearfacts@gmail.com



 <p>Find us on Facebook New Pen Del Newfoundland Club https://www.facebook.com/groups/224590876010/</p>	 <p>Instagram</p> <p>Scan the QR Code with your phone camera</p> 	<p>New-Pen-Del Website https://npdnewfs.wildapricot.org</p> <p>Newfoundland Club of America Website https://www.ncanewfs.org</p>
<p style="text-align: right;">Bear Facts 44</p>		

NEW-PEN-DEL

MEETING MINUTES



NEW-PEN-DEL BOARD MEETING

MINUTES

Date: May 20, 2021

Time: 8 PM

Location: Zoom

ZOOM Meeting Information:

tokennewf@gmail.com is inviting you to a scheduled Zoom meeting.

Topic: tokennewf@gmail.com's Zoom Meeting

Time: May 20, 2021 08:00 PM Eastern Time (US and Canada)

Join Zoom Meeting

<https://us02web.zoom.us/j/5589246951?pwd=WDBNc2xvdndvK2xITk9ENDVXUUg2dz09>

Meeting ID: 558 924 6951

Passcode: 415359

One tap mobile

+13017158592,,5589246951#,,,,*415359# US (Washington DC)

+13126266799,,5589246951#,,,,*415359# US (Chicago)

Dial by your location

+1 301 715 8592 US (Washington DC)

+1 312 626 6799 US (Chicago)

+1 646 558 8656 US (New York)

+1 253 215 8782 US (Tacoma)

+1 346 248 7799 US (Houston)

+1 669 900 9128 US (San Jose)

Meeting ID: 558 924 6951

Passcode: 415359

Find your local number: <https://us02web.zoom.us/j/kc0S65cFk4>

Attendees:

X Chris Lamuraglia- President	X Cathy Wisniewski- Board Member
X Ana Perazo Kroeger Vice President	X Karin Bystol Board Member
X Karen Doman Secretary	X Donna Campbell Board Member
A Mark Keyser Treasurer	A Euny Warren Ways N Means
X Amy Supko Working Dog Secretary	A Gary Ottey Property Chair
X Tiffany Reed Board Member	X Kat Lynn Education Chair
X Wendy Keyser. Membership Chair	X John O'Neill

Meeting Called to Order: 8:03 pm

Type of Meeting Zoom Board Meeting

Meeting Adjourned: 9:44 pm

Notetaker: Karen Doman

Agenda Item: Approve Minutes

Discussion: .none

Motion to approve meeting minutes:

Motion to Approve: Tiffany Reed

Second: Donna Cambell

Motion Carried Yes Unanimous

Members voting yes:

No

Members voting no:

Agenda Item: President's Report

Presenter: Chris Lamuraglia

The October 2021 national is cancelled

We need to plan an annual meeting in the fall. Kat can book a place. Her suggestion is that we plan a fun day that is solely for that and not to combine it with a draft test.

Cit will be the weekend of October 30 and we need a chair. New Jersey parks are now open. Kat will check on those days with Mercer County park. John Affel may chair it and Kat will confirm that.

Annual meeting will be at the fun day and we will also present awards at the Fun Day.

we will need to firm up our draft and water tests,

Wendy has resigned from Membership chair, we need to replace her

Morris & Essex is a go at present 10/6/21...

Calendar redo fund raiser- the artist has offered us the drawings - Idea was well received

Agenda Item: Vice-President’s Report

Presenter: Ana Perazo Kroeger

Ana is going to work with John on budgets and Chris will help.

Discussion: none

Agenda Item: Treasurer’s Report

Presenter: Mark Keyser

Attached as a separate e mail

Discussion-none

Motion to Approve Treasurer’s Report

Motion to Approve: Ana Perazo Kroeger

Second: John O’Neill

Motion Carried Yes unanimous

Members voting yes:

No

Members voting no:

Agenda Item: Secretary’s Report

Presenter: Karen Doman

Discussion: No report

Agenda Item: Working Dog Secretary’s Report

Presenter: Amy Supko

Working dog report:

Field trip to Tobyhana Park on April 18, possible training site this year for those in the area who want to get together and train.

Water test: September 17-19, 2021 Judges Cassie and Mark Iken from MO

Draft workshop could be held at John O’Neill’s

Draft test: October 16 & 17 at Brubaker Park in East Earl, PA Judges Donna Thibault/CT and Gary Walker/MO

Discussion:

Water Training: Round Valley is still up in the air. Amy has been in touch with them the last few months. We would be limited in the number of dogs as we were two years ago. Should we make face masks mandatory? Requiring vaccinations would not be feasible. Colonial is requiring everyone except callers in the water to wear masks. We could do the same and require social distancing.

There was some discussion about whether or not people who have been vaccinated have to wear masks.

To sum it up Chris suggested we follow CDC and state guidelines. Anyone who is uncomfortable can opt out of participating. Different states use different guidelines.

Ana investigated Liberty Lake Day Camp in Bordentown - They would allow water training but he would need to have an employee there to open it. The charge would be \$200 per day. Sundays would be available although not every Sunday. Ana is going to look at the sight.

Beltsville should receive our paperwork in the next few days. Karen will talk to Mark Keyser about the insurance policy.

Question: do we want to have on line registration? If so that information has to go to Dwight Gorsuch ASAP

Karen will ask about including a Covid waiver in the premium.

Newf Tide was notified of the test date but may not publish a new issue before the test.

Committee Reports

Agenda Item: Awards

Presenter: Karin Bystol/Donna Campbell

The Eubanks prints have been ordered.

Discussion: Awards will be handed out at the Fun Day. This information will be posted in Bear Facts and other social media sites.

Agenda Item: Trophies

Presenter: Wendy Keyser

Discussion: We are on board for the Morris and Essex dog show but Wendy is concerned about the cost. We need to do some fund raising. We do have a number of items that could be raffled.

Agenda Item: Nominating Committee

Presenter: Christine Lamurglia

Agenda Item: Bench

Bench is a go and there is talk of another triple crown in the fall of 2022. Do we want to join? There is a traditional at York in the Spring. We would not be doing both.

Discussion: The triple crown was a great event with six shows in three days. It was very well organized. We would need more volunteers, we only had two from our club. It is a tremendous amount of work prior to the event.

Financially we did not do well. It was the first time we did an independent. We don't have to make the decision for another month. Colonial and South Eastern would do it without us.

Agenda Item: Rescue

Presenter: Chris LaMuraglia

We have 15 wonderful homes waiting to rescue but no dogs.

Discussion:

Amy had a call from someone who had a female she needed to surrender. Amy sent her to the organization we work with.

Agenda Item: Bear Facts

Presenter: Ana Peraza Kroeger

Ana needs input by next weekend.

Discussion. We may buy a draft cart to raffle. We would post it on line to reach wider audience.

Should we have a sell-it corner in Bear Facts? Ana expressed some concern about liability - we would include a waiver clause and tell them to contact the individual directly. Concern was expressed that we would not get a lot of offers.

Agenda Item: Ways N' Means

Presenter: Euny Warren

No report

Agenda Item: Digital Committee

Presenter: Euny Warren

We need to revamp some of the things we have posted on Wild Apricot- life time members will be removed. They will be working on updating.

Agenda Item: Membership

Presenter: Wendy Keyser

Tiffany Reed and Amy Kroeger would be willing to take this on from Wendy.

Agenda Item: Education Committee

Presenter: Kat Lynn

No report

Agenda Item: Finance

Presenter: Mark Keyser

No report

Agenda Item: Property

Presenter: Gary Ottey

No Report

New Business

No new business

Executive Session

Motion to enter Executive Session at 9:33 pm

Motion to Approve: John O'Neill

Second: Amy Supko

Motion Carried Yes Unanimous
No

Members voting yes:
Members voting no:

Motion: to approve new members

Laurie & John DeFilippis
Madison, NJ
Sponsor, Wendy Keyser, Membership Chair

Craig Dunn
Cream Ridge, NJ
Sponsor, John Affel & Kat Lynn

Morgan Leister
Pipersville, PA
Sponsor, Karen Doman

Motion to approve: Karin Bystol

Second: John O'Neill

Motion Carried Yes Unanimous
No

Members voting no:

Motion: Motion to appoint Amy Kroeger and Tiffany Reed as co-chairs of Membership

Motion to approve: Karen Doman

Second. John O'Neill

Motion Carried Yes Unanimous
No

Members voting yes:
Members voting no:

Motion to Exit Executive Session at 9:41 pm

Motion to Approve: John O'Neill

Second. Ana Perazo Kroeger

Motion Carried Yes Unanimous
No

Members voting yes:
Members voting no:

Meeting Adjourned

Agenda Item: Motion to Adjourn

Presenter: Chris Lamuraglia

Discussion: *Next Meeting – June 24 at 7 pm*

Motion to Approve: Tiffany Reed

Second: Karin Bystol

Motion Carried Yes Unanimous

Members voting yes:

No

Members voting no

Treasurer’s Report

New Pen Del
Treasurers Report
May 6, 2021

Cash Balances	
Operating Checking	4,677.35
Operating Savings	3,439.71
Certificate of Deposit	26,014.64
Rescue Checking	3,530.21
Rescue Savings	15,915.91
Deposits 3/18/2021-5/6/2021	
Interest	29.16
PayPal deposit	1,076.33
Rescue Interest	0.27
Total	1,105.76
Checks Written	
Prairie Dog Pottery	(1,485.00) Trophys For Triple Crown
Pet Supply +	(165.26) Ring Favors for Triple Crown
Sportsman Ins Agcy Plan--GL Policy	(775.00) Liability Policy
Vicki Seller Cushman	(582.00) Judging at Triple Crown
Bob Busby	(253.96) Judging at Triple Crown
Pizza	(400.80) Lunch for Triple Crown (Lunch Wagon did not arrive)
Colonial Newfoundland Club	(1,699.42) Triple Crown Costs Fronted BY Colonial plus shared fund raising (Detail to come);
Mark Keyser Fish Place Biscuits	(170.14) Triple Crown Ring Handouts (favors not packed)
	(5,531.58)

Note Colonial owes New Pen Del \$1,600 + as reimbursement of our out of pocket costs)



NEW-PEN-DEL BOARD MEETING

MINUTES

Date: June 24, 2021

Time: 8 PM

Location: Zoom

ZOOM Meeting Information:

tokennewf@gmail.com is inviting you to a scheduled Zoom meeting.

Topic: tokennewf@gmail.com's Zoom Meeting

Time: Jun 24, 2021 08:00 PM Eastern Time (US and Canada)

Join Zoom Meeting

<https://us02web.zoom.us/j/83027380009?pwd=T0ISNGVQaXNhNmkyejkzM1g3bUNWZz09>

Meeting ID: 830 2738 0009

Passcode: 677933

One tap mobile

+16465588656,,83027380009#,,,,*677933# US (New York)

+13017158592,,83027380009#,,,,*677933# US (Washington DC)

Dial by your location

+1 646 558 8656 US (New York)

+1 301 715 8592 US (Washington DC)

+1 312 626 6799 US (Chicago)

+1 669 900 9128 US (San Jose)

+1 253 215 8782 US (Tacoma)

+1 346 248 7799 US (Houston)

Meeting ID: 830 2738 0009

Passcode: 677933

Find your local number: <https://us02web.zoom.us/u/kc0S65cFk4>

Attendees:

x Chris Lamuraglia-	President	x Cathy Wisniewski-	Board Member
x Ana Perazo Kroeger	Vice President	xKarin Bystol	Board Member
x Karen Doman	Secretary	xDonna Campbell	Board Member
Mark Keyser	Treasurer	x Euny Warren	Ways N Means
xAmy Supko	Working Dog Secretary	Gary Ottey	Property Chair
xTiffany Reed	Board Member	Kat Lynn	Education Chair
xAmy Kroeger	Membership Chair		

xJohn Affel

Meeting Called to Order: 8:05 pm

Type of Meeting Board Meeting

Meeting Adjourned: 10 pm

Notetaker: Karen Doman

Agenda Item: Approve May 2021 Minutes

Discussion: .

Motion to approve meeting minutes:

Motion to Approve: John O'Neill

Second. Anna Perazo Kroeger

Motion Carried Yes x

Members voting yes:unanimous

No

Members voting no:

Agenda Item: President's Report

Presenter: Chris Lamuraglia

Nothing of note to report

Discussion:

Agenda Item: Vice-President's Report

Presenter: Ana Perazo Kroeger

I'm going through old P&Ls and Meeting minutes to establish preliminary committee budgets. It would be helpful to have P&Ls for working events and bench shows. Can anyone help get me that information?

Discussion: John may be able to help

Agenda Item: Treasurer’s Report

Presenter: Mark Keyser

New Pen Del			
Treasurers Report			
6/18/21			
Cash Balances		Not Transferred	Total
Operating Checking	4,018.89	1,620.00	5,638.89
Operating Savings	3,439.74		3,439.74
Certificate of Deposit	26,015.06		26,015.06
Rescue Checking	3,530.21		3,530.21
Rescue Savings	15,916.04		15,916.04
Deposits 5/7/2021-6/18/2021			
Interest	0.03		
Triple Crown	216.54		
Rescue Interest	0.13		
Total	216.70		
Checks Written			
Kathryn Lynn	300.00	Fun Fest Park	
Robert Gerri	25.00	Water Training	
Tiffany Reed	150.00	Auction Item	
Ana Peraza	400.00	Water Training	
Note Colonial owes New Pen Del \$1,600 + as reimbursement of our out of pocket costs)			

Discussion

Motion to Approve Treasurer’s Report

Motion to Approve: Ana Perazo Kroeger

Second: John O’Neill

Motion Carried Yes

Members voting yes: unanimous

No

Members voting no:

Agenda Item: Secretary’s Report

Presenter: Karen Doman

Discussion: No report

Agenda Item: Working Dog Secretary’s Report

Presenter: Amy Supko

Paws n claws- should we do it this year? Lee Johnson usually organizes it and lives very close to Round Valley A big part of this event is the food- are people comfortable with that? Chris would like to have it but if not let’s definitely do it next year- Amy will reach out to Lee to talk to her about next year

Water training update- should have Round Valley permission soon for Thursdays and perhaps a few Saturdays Tobyhanna - first session went very well- Training at Liberty Lake went very well- 3 new puppies and one new member who is very excited- Donna had good tips- are also encouraging people to sign up to steward for the water test- there will be 8 sessions- Using Wild Apricot has worked out very well

Water Test- preparations are going well

Draft Test is October 16 and 17

Discussion:

Amy would like to have a draft workshop- perhaps Mercer County Park- Kat Lynn will check-cost is \$300 a day

After October 31 there is no fee for the park- Draft

John O’Neill may host

Still working on getting a date- maybe consider doing it in the Spring as we have a very busy fall schedule- consensus was to do it in the Spring- could do impromptu training among members

There is also a draft demo at the Fun Fest

There was some consideration for offering a draft test in April which would put us back on our schedule- instructors and judges are busy in the fall- park reservations - could probably use Mercer

Amy will get instructors for the March training

Committee Reports

Agenda Item: Awards

Presenter: Karin Bystol/Donna Campbell

Will be handed out at annual meeting

Discussion:

Chris is asking that the list of awards that will be posted AFTER the awards

Agenda Item: Trophies

Presenter: Wendy Keyser

Discussion:

Agenda Item: Bench Show

Presenter: Christine Lamurgia

Morris & Essex will be happening, all trophies have been ordered will need to do fund raising & create a budget

Triple Crown -In the fall of 2022 with Colonial- NPD would sponsor two shows in one day, Colonial two shows in one day, haven't heard from Northeastern club

York -Colonial would take 1 day -NPD 1 day- in March 2022

For York we need to have judges- Christine has a list. Also need a sweepstakes judge that we pay for,

Discussion

Questions about having Colonial coming to York and do one day and NPD would do one day- would save on expenses- Karin Bystol has offered to chair with Christine as co-chair

Question was raised : do we make money or break even?- we usually make money at York, for Morris and Essex we do a high end raffle with tickets at \$35

The benefit of combining with Colonial means we spread out the work and the expenses - if we sponsor two shows we usually don't make much if any money

Everyone at the meeting supported this plan

There was an extended discussion on judge choices for sweepstakes judge- they get a night in the hotel and a \$100 gift card

Agenda Item: Rescue

Presenter: Chris LaMuraglia

Still getting requests for a rescue- send any candidates to Chris

Discussion:

Agenda Item: Bear Facts

Presenter: Ana Peraza Kroeger

Next BF due out 8/15. Please send articles, information you want included, especially, if you'll need me to create a flyer for an event. Please don't leave it to last minute. It takes me a while to get these done.

Discussion

Agenda Item: Ways N' Means**Presenter:** Euny Warren

Nothing to report- committee chairs should reach out to Euny- there is some concern about finances- we hesitate to spend money before we make money- can do an On-line raffle- we are trying to get away from T Spring- quality has deteriorated. She is working with two other vendors -the downside is that once the campaign is over the items are taken off the site. Euny is not in favor of buying and keeping inventory.

Discussion:

Chris suggested we explore a calendar sale

Karen and Amy will talk with Euny about water test items

Euny has baskets that will be shared among upcoming events

Karin has agreed to make a bag for the on line raffle for the water test- she will send a picture to Euny who will post it on the Facebook site and the working dog website

Agenda Item: Digital Committee**Presenter:** Euny Warren

nothing to report-

Discussion:**Agenda Item: Membership****Presenter:** Amy Kroeger/Tiffany Reed

- Amy was updated as an administrator on Wild Apricot to address Membership issues.
- Tiffany and Amy are updated on the Site as Co Chairpersons of the Membership Committee.
- The position will be split as follows: Tiffany will receive applications by mail, her name and address are updated on the application on the WA site. Amy will update Wild Apricot and receive any applications updated through the website. Both will answer any membership questions from prospective members. Other tasks will be divided as they come up.
- Questions for Wendy:
 - Are all the members current on the Wild Apricot Contact list?
 - Are there any prospective members going into Bear Facts this quarter? Can you send us their applications so we can track them.
 - There are some members that are flagged on Wild Apricot as having outdated emails there. Should we try to track these members down or is it their responsibility to update their information? This may affect their renewal emails.
 - Can you give us an outline of the membership responsibilities regarding your process for prospective members and the membership renewals as well as any other responsibilities we need to address.

Discussion:**Agenda Item: Education Committee****Presenter:** Kat Lynn

Nothing to report

Agenda Item: Finance

Discussion:

Presenter: Mark Keyser

Agenda Item: Property

Nothing to report

Presenter: Gary Ottey

Discussion:

New Business

Agenda Item: Fun Day

- John Affel to chair
- Fall Fun Fest 2021 report to NPD BOD

June 24th, 2021

Prepared by John Affel – Committee Chair and Kat Lynn – 2019 Committee chair

What? – New Pen Del Fall Fun Fest

Where: Mercer County Park East Picnic Area. Entrance on Edinburg Rd north of Old Trenton Rd. West Windsor, NJ

When: Saturday October 30th, 2021. 8:30 AM to 4:00 PM

Why: To promote the objectives of NPD. See Section II (c) of Constitution and Bylaws.

Schedule:

Time	Activity	People & Comments
8:30 – 1:00 PM	Registration opens	
8:45- 10:00 AM	Hospitality	
9:00 - Noon	CGC Test & Trick Dog	
9:00 – 1:30	Ways & Means merchandise sales	
9:00 – 12:30	Special Raffle sales and drawing at 12:30	
9:00 - 12:00	Brown Bag sales and drawing at Noon	
9:00 – 10:30	Draft Dog Work shop	
9:00 - ?	Newfie Makeovers	

10:30 – Noon	Water Dog Work Shop
10:30 -11:30	Newfy Olympics Games
Noon	Costume Parade Halloween?
12:45 -	Lunch
1:30 – 1:50	NPD Annual Awards
2:00	Annual Meeting

Will do trick dog tests as well as CGC- Terri Kerr

Resources needed:

Newfie games, Newfie Make-over

Ways & Means will need Baskets for Brown Bag

Merchandise sales- check with John about a pop up

Prizes needed for Newfie Olympics Games and for Costume Parade winners (inexpensive)

Need help with various activities and will need the credit card machine

Discussion: Put a flyer on Wild Apricot and advertise on Facebook

Agenda Item: Should Membership in the club be restricted to only Newfie members?

Discussion: Amy pointed out that we voted several years ago that we would allow two non Newf members to be grandfathered- but no non-newfs in the future- if they did not renew they are out

Several board members do not want to allow them to renew

Lengthy discussion on non Newfie members training at Liberty Lake-

Perhaps the solution is that non Newfs should only be given slots if there is space-this idea received support from the board

we have advertised water training to the full membership

People who were actively training for the water test were given preference- this excludes people who are just starting out - the question is how fair is this? Karin argued that is is very important to open this up to those who are starting out

We need to see if we can open this up next year - can we find a site that could take more dogs?

Agenda Item: annual meeting- will be held at the end of the Fall Fest

Agenda Item: Cardiology Clinic in the fall with Dr. Burket? John O'Neill

Discussion: would there be enough interest? How much would it cost? John said we could invite as many as we want- could open it to other clubs

\$225 for a full echo, \$25 for a consultation-do about 25-30 per day- charge non NPD members more

Pay in advance

it would be an outing and there would be no cost to NPD-John will pursue this for November

Open to NPD members only for two weeks then open it up to other clubs with a closing date

Agenda item: Lifetime longevity John O'Neill

John asked us to participate in the study- information will come out to regional clubs will then be emailed

Executive Session-No executive Session needed

Motion to enter Executive Session at pm

Motion to Approve:

Motion Carried Yes
 No

Second:

Members voting yes:
Members voting no:

Motion:

Motion to approve:

Motion Carried Yes
 No

Members voting yes:
Members voting no:

Motion:

Motion to approve:

Motion Carried Yes
 No

Members voting yes:
Members voting no:

Motion to Exit Executive Session at pm

Motion to Approve:

Motion Carried Yes
 No

Members voting yes:
Members voting no:

Meeting Adjourned

Agenda Item: Motion to Adjourn - John O'Neill Seconded: Karen Doman

Discussion: *Next Meeting –was not scheduled*

Motion to Approve:

Motion Carried Yes
No

Members voting yes:unanimous
Members voting no



**NEW-PEN-DEL
BOARD MEETING MINUTES**

Date: July 22, 2021

Time: 7 PM

Location: Zoom

ZOOM Meeting Information:

tokennewf@gmail.com is inviting you to a scheduled Zoom meeting.

Topic: tokennewf@gmail.com's Personal Meeting Room

Join Zoom Meeting

<https://us02web.zoom.us/j/5589246951?pwd=WDBNc2xvdndvK2xITk9ENDVXUUg2dz09>

Meeting ID: 558 924 6951

Passcode: 415359

One tap mobile

+13017158592,,5589246951#,,,,*415359# US (Washington DC)

+13126266799,,5589246951#,,,,*415359# US (Chicago)

Dial by your location

+1 301 715 8592 US (Washington DC)

+1 312 626 6799 US (Chicago)

+1 646 558 8656 US (New York)

+1 253 215 8782 US (Tacoma)

+1 346 248 7799 US (Houston)

+1 669 900 9128 US (San Jose)

Meeting ID: 558 924 6951

Passcode: 415359

Find your local number: <https://us02web.zoom.us/j/kc0S65cFk4>

Attendees:

X	Chris Lamuraglia	President	X	Cathy Wisniewski	Board Member
X	Ana Peraza Kroeger	Vice President	X	Karin Bystol	Board Member
X	Karen Doman	Secretary	X	Donna Campbell	Board Member
X	Mark Keyser	Treasurer	X	Wendy Keyser	Trophies
X	Amy Supko	Working Dog Secretary	X	Euny Warren	Ways N Means
	Tiffany Reed	Board Member	X	Kat Lynn	Education Chair
X	John O'Neill	Board Member	X	Amy Kroeger	Membership Co-Chair
				Gary Ottey	Property

Meeting Called to Order: 7:07pm **Type of Meeting** Board Meeting

Meeting Adjourned: 9:08 pm **Notetaker:** Ana Peraza Kroeger

Agenda Item: Approve Minutes for June 24th Board Meeting

Discussion: None

Motion to approve meeting minutes:

Motion to Approve: Karin Bystol

Second: Ana Peraza

Motion Carried Yes

Members voting yes: All, except Mark

Members abstaining: Mark Keyser

Agenda Item: President's Report

Presenter: Chris Lamuraglia

Discussion:

Meet the breeds- NCA requested that NPD host the Meet the Breeds at Oak, PA. on Sept 25-26. NCA willing to pay for costs for decorations and educational materials, 3-8' tables will be available. No one is currently available to chair and the event the week after the water test. Chris will respond to NCA that we don't have the manpower to chair this event at this time.

Agenda Item: Vice-President's Report

Presenter: Ana Peraza Kroeger

Discussion: Please provide committee budgets/event budgets to Ana asap. All events should provide a proposed budget, Draft Test, Water Test, Draft Workshop, Fall Fun Fest, Water Training, Educational Events, etc. Ana will provide copy of in progress budget to Chris and Mark.

Agenda Item: Treasurer's Report

Presenter: Mark Keyser

7/14/21				
Cash Balances				Net Available
Operating Checking	5,690.30	Funds to be disbursed for water training (already collected)	800.00	4,890.30
Operating Savings	3,439.77			
Certificate of Deposit	26,015.51			
Rescue Checking	3,530.21			
Rescue Savings	15,916.18			
Deposits 6/19/2021-7/14/2021				
Interest	0.48			

New Membership	35.00			
Colonial For Triple Crown	1,665.65			
Pay Pal	1,780.43	Water Training 1,620, Tee Spring 114.57, Dues 100, Less Fees 54.14		
Total Operating	3,481.56			
Rescue Interest	0.14			
Total	3,481.70			
Checks Written				
Karen Doman	(142.50)	Water Training & Test		
Gary Otty	(141.94)	Water Training & Test		
Walkersville Fire Co	(100.00)	Donation		
Susan Lonergan--Air for Judge	(723.60)	Water Training & Test		
Susan Lonergan-Hotel for Judge	(301.63)	Water Training & Test		
Ana Peraza	(400.00)	Water Training & Test		
	(1,809.67)			
Final Results Profit (Loss)				
Triple Crown	(1,434.39)	Final		
Water Training	(5.00)	Final--Not all fund disbursed but included in total		
Water Test	(1,309.67)	Pending Fees to be collected		
<p>Note from my review of 2020 it appears that the operating account transferred \$1,439.11 too much to Rescue;</p> <p>I need a motion to approve me moving that money back to operating. Total Transfers 1/1/20-8/31/2020 tp rescue from operating were \$6,793.28--anyone have knowledge of what all of these were for; no funds came out of Rescue in that time period</p>				

Discussion: Mark believes \$6,793 was incorrectly moved to rescue. He will reach out to John to find out if the \$5,300 can be moved back to the operating budget.

Motion to approve moving \$1,439 from Rescue back to operating account

Motion to approve: Mark Keyser

Second: Ana Peraza

Motion Carried Yes

Members voting yes: All

Motion to Approve Treasurer’s Report

Motion to Approve: Ana Peraza

Second: Donna Campbell

Motion Carried Yes

Members voting yes: All

Agenda Item: Secretary’s Report

Presenter: Karen Doman

Discussion: No report

Agenda Item: Working Dog Secretary’s Report

Presenter: Amy Supko

Discussion:

Round Valley update: Amy signed permit and is waiting for final approval.

Liberty Lake update: Liberty Lake got canceled last Sunday due to water quality post heavy rain. Some members donated their participation fee for last week, back to the club. \$1620 paid through PayPal - WA. \$600 paid to LL for 3 training sessions so far.

Tobyhanna update- Training is every other Tuesday and is well attended and going smoothly. George Abraham made a platform to use on the boat that we rent.

Draft Test in the Fall - October 16-17, Per Wendy, tote bags with New Pen Del logo was used for the last test trophies. Amy S. Will let Wendy know what she would like for trophy.

Draft Workshop - Preliminarily scheduled for Spring (March)

Spring Draft Test - Considering scheduling another draft test after workshop in the Spring (April) to get the spring draft test back on schedule.

Upcoming Water Test:

Things moving along with water test. They need help from Euny to get the t-shirt sale online. Also want to get Karin’s raffle up online. Euny will try to get the graphic in within the week.

- T shirts and the Bag that Karin is making need to be posted on line asap so that people can purchase them.
- One club charged \$5 per ticket and 5 for \$20 and made \$1200 on Karin’s bag raffle and all agree this is a good price for raffle tickets.
- Prizes/trophies need to be ordered- unless we want to use hats with the club logo and/or aprons with a Newf on the front- Karen can get these - Cathy has the trophies (towels and tote bags). Cathy will let Wendy, Karen and Amy S. know by Monday how many trophies she has to see if we need to order extra.

- Karen will donate NPD embroidered caps to use as judges gifts, re-quals, etc. Chris thinks Gary Ottey might have embroidery file. The store that used to have the logo embroidery file went out of business. Karen will send the artwork to the board for quick look.
- Money spent so far:
 - Judge's lodging and travel (excluding car rental) and gift \$1450.23
 - Pavillion Rental: 142.50
 - State Park Permit: good for three years starting 2021-\$350
 - Insurance Certificate-\$50
- Stewards are needed-- some people from the Tobyhanna group have committed- Karin Bystol is handling this
- Hospitality for judges is being handled by Sue Lonergan
- Robert Gerri is taking care of lunches and "breakfast" as well as reservations for the Saturday night dinner
- Pat Matthews will be doing the catalog and working the three test days

Plow Farms Christmas Tree Pull: Brenda from Plow Farms sent Ana a FB message, to say that they hoped NPD would participate in the tree pull this year. They asked that we pick a date and let them know. Who can coordinate this with them? They're also wanting to fundraise in the name of their dog, who passed recently and has 5000 social media followers, to create a fund for Newfie owners to get assistance for drugs, vet care, food for dogs, etc. through New Pen Del. Usually done 2nd Saturday in December (December 11). Amy S. Will reach out to her.

Committee Reports

Agenda Item: Awards

Presenter: Karin Bystol/Donna Campbell

Discussion:

Still waiting for prints to be shipped, Donna has ordered the matted frames. Mats will be personalized with award details. Waiting for price from printing company.

Agenda Item: Trophies

Presenter: Wendy Keyser

Discussion: Trophies for working events are being coordinated as described in the Working Dog Secretary section of these minutes.

Agenda Item: Bench Show

Presenter: Christine Lamuraglia

Discussion:

Regional (M&E) - Judge change to John Constantine-Amodei - Everything is in line. Trophies are in the works and Euny working on fundraising. We still have to figure out what to do for hospitality.

Celtic Classic - Colonial is interested in splitting the weekend with us. New Pen Del will do Saturday, Colonial will do Sunday. Sweeps Judge will Richard Jackson.

Triple Crown update - Scheduled for October 2022, SENC canceled their participation. Group reached out to NENC and they will take their place. Last day will be BOB Juniors, BOB Show. Currently evaluating judges, Manleo Masso from Italy could potentially judge. Terri Hunt, Bob Enis, Brian Myer potential judges.

Agenda Item: Nominating committee - Slate for October

Presenter: Wendy Keyser

Discussion:

Chris will renew President position, Ana will renew VP position, Amy S. Will renew Working Dog Secretary position, Tiffany will renew Board position and Euny has accepted Board position to replace outgoing John O'Neill. Wendy will provide a letter to Secretary to send out through Wild Apricot. One member needs letter via snail mail.

Agenda Item: Rescue

Presenter: Chris LaMuraglia

Discussion: Chris has gotten a lot of messages of people wanting to adopt Newfs. So if anyone knows of dogs available, please let Chris know. Chris is requesting that board consider NPD formally partner with Cathy Derench's group. According to Karen D., Member R. Blakely who has been training at Tobyhanna, has done rescue before for a different breed. Karen will reach out to him and ask him to reach out to Chris to find out if he is willing and experienced to handle rescue for NPD.

Agenda Item: Bear Facts

Presenter: Ana Peraza Kroeger

Discussion: Next Bear Facts due out mid August. Input due end of July. Ana will include Karin's bag raffle for water test in BF. Any information related to membership renewals or Morris and Essex should be included in this issue. The next issue after the August issue is not until November.

Agenda Item: Ways N' Means

Presenter: Euny Warren

Discussion: Euny reached out to a company that works like TeeSpring, Spiderweb Promotions but they charge a small fee to host your products, but she doesn't know what the fee is. People have vouched for their quality. Euny doesn't know how the water test logo will print because it's busy. She'll get the logo up this week.

Karin's bag raffle needs to be set up. As an alternative to raffle tickets which would require photos be sent to participants, a random selector can be used. Euny will put together a flyer and email to post on NPD FB page, Newfwise and Working Dog Group and send out email blast to members.

Raffles for Morris & Essex need to be set up as well.

Agenda Item: Digital Committee

Presenter: Euny Warren

Discussion: Price is increasing for WA next month. We're at the 250 tier and Price is going up from \$650 to \$780. Board thought we should consider upping the membership fees to cover this.

Motion to Approve Raising Membership dues by \$5, to \$35/single and \$40/family

Motion to Approve: Ana Peraza

Second: John O'Neill

Motion Carried Yes

Members voting yes: All

Agenda Item: Membership

Presenter: Amy Kroeger/Tiffany Reed

Discussion:

Amy will talk to Wendy about getting renewal letter out. This should go out early August.

This individual is proposed for membership:

Dolores Romano Everett
1312 Seneca Trail
Stroudsburg, PA 18360

Individual Membership
Sponsor: George Abraham
She has one Newfoundland

Dolores met Karen Doman at the Tobyhana Water Training, Karen discussed expediting the membership process to ensure Dolores would be included in the insurance certificate. Karen was going to discuss this with Chris L.

Dolores applied through Wild Apricot and paid for her membership at the time of her application. The application is currently shown as pending on Wild Apricot.

Agenda Item: Education Committee

Presenter: Kat Lynn

Discussion: Kat will plan recall workshop with Teryl.

Agenda Item: Finance

Presenter: Mark Keyser

Discussion: No discussion

Agenda Item: Property

Presenter: Gary Ottey

Discussion: No discussion

Old Business

Agenda item: Heart Clinic

Presenter: Chris Lamuraglia/John O'Neill

Discussion: November is good month for cardiac clinic. John will set up a date in November.

Agenda item: Annual Meeting

Presenter: Kat Lynn/Chris Lamuraglia

Annual meeting will take place at the fall fest. We need someone to do feet/ear trims. Chris and Amy K. can do ear/feet trims.

New Business

Agenda Item: None

Executive Session

Motion to enter Executive Session at 8:59pm

Motion to Approve: Ana Peraza

Second: Karin Bystol

Motion Carried Yes

Members voting yes: All

Motion to Vote in Member: Dolores Everett, Sponsor is George Abraham, she has one neww and has been water training.

Motion to Approve: Ana Peraza

Second: John O'Neill

Motion Carried Yes

Members voting yes: All

Discussion: Euny will resign from Digital Committee Chair- Ana agreed to take it over.

Motion to Assign Ana Peraza Kroeger Digital Committee Chair

Motion to Approve: John O'Neill

Second: Amy Supko

Motion Carried Yes

Members voting yes: All

Motion to Exit Executive Session at 9:03 pm

Motion to Approve: John O'Neill

Second - Mark Keyser

Motion Carried Yes

Members voting yes: All

Meeting Adjourned

Agenda Item: Motion to Adjourn

Presenter: Chris Lamuraglia

Discussion: *Next Meeting – Thursday, August 19, 7pm*

Motion to Approve: John O'Neill

Second: Karin Bystol

Motion Carried Yes

Members voting yes: All

HOW WELL DO YOU KNOW THE NEWF? ANSWER KEY



1. The single most important characteristic of the Newfoundland breed is:

- size
- balance
- temperament
- coat

2. The coat of a Newfoundland

- has a coarse undercoat
- when rubbed against the nap, it tends to fall back into place
- has a outer coat that is soft and dense
- all of the above

3. In general characteristics and appearance, the Newfoundland is:

- moderately muscled
- medium in size
- heavily boned
- slightly bulky

4. The croup:

- slopes moderately
- slopes slightly
- has an extreme slope
- does not slope

5. The length of the muzzle from the tip of the nose to the stop is:

- equal to that from the stop to the occiput
- less than that from the stop to the occiput
- slightly more than that from the stop to the occiput
- considerably more than that from the stop to the occiput

6. Disqualifications in the Newfoundland Standard refer to:

- color
- temperament
- expression
- size

7. Substance is determined by:

- spring of rib
- strong muscle
- heavy bone
- all of the above

8. The ears are:

- large in size
- triangular
- posted at the tips
- set well forward on the skull

9. Regarding the body:

- the back is narrow
- the topline is slightly sloping from the withers to the croup
- the brisket reaches at least down to the elbow
- the croup is level

10. Newfoundland in motion have:

- good reach
- strong drive
- the impression of effortless power
- all of the above

